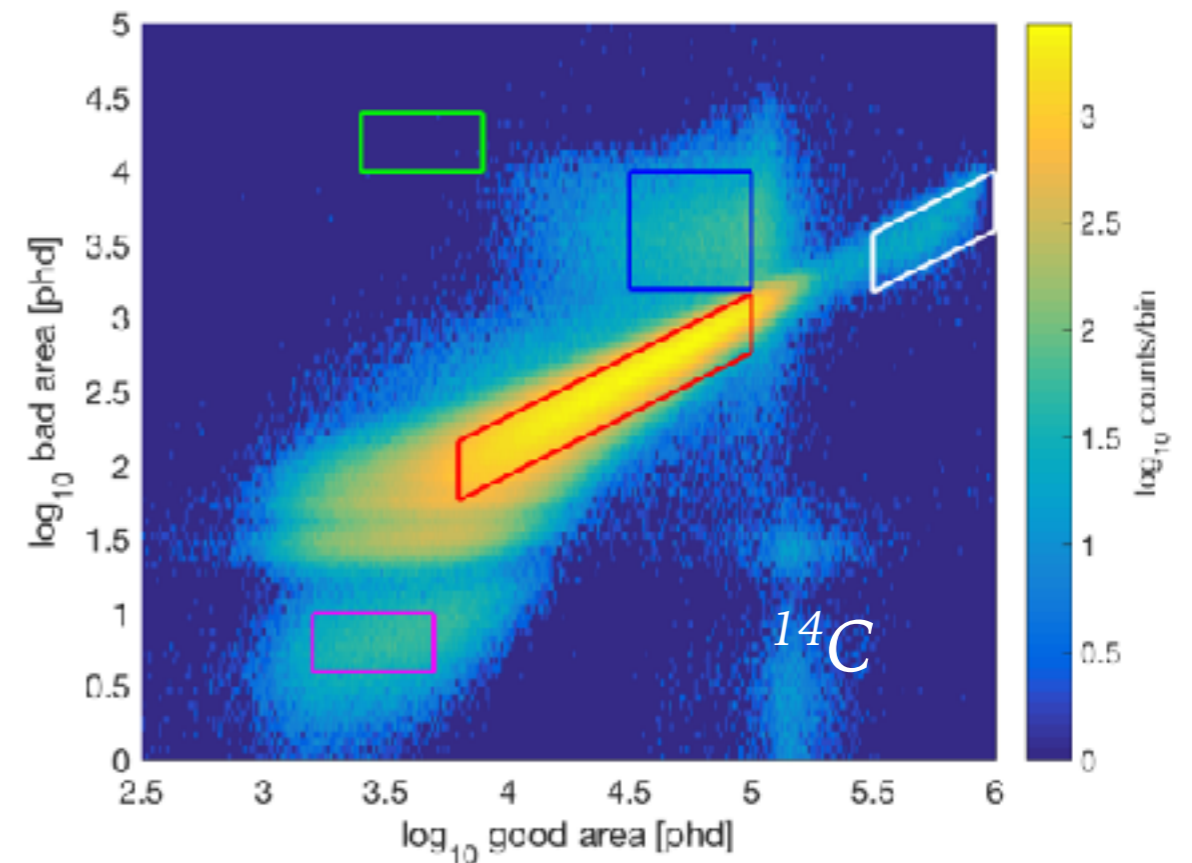
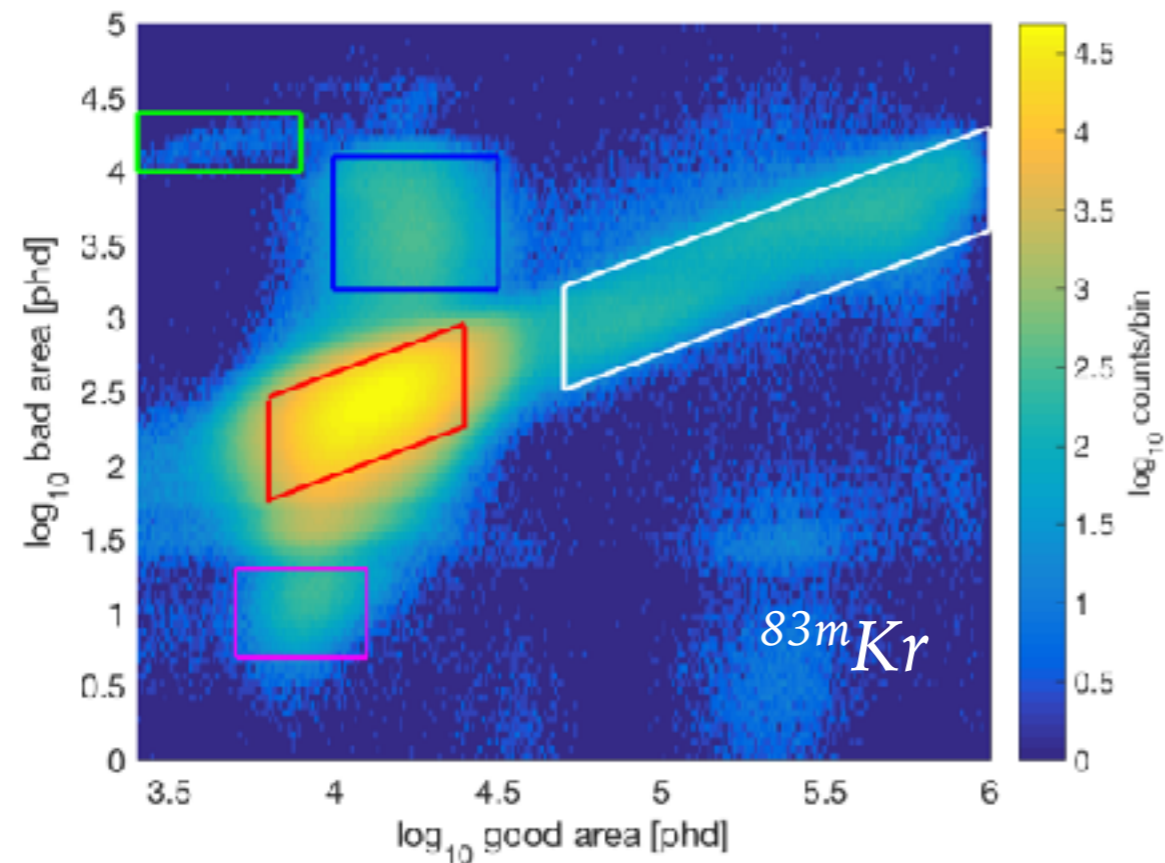


UPDATE: 29 NOVEMBER 2017



- LUX analysis: Previously worked on extending the bad area cut using Kr-83m data (*left*) which has a ~ 41.6 keV energy signal. Now, I'm using C-14 (*right*) to push to even higher energies (β^- with $Q=156$ keV). Currently checking out the populations present in C-14 plot.
- LZ Phase II: Organizing what type of work we can accomplish before holiday shut-down.
- LZ grids: Planning work to test cleaning methods on grid wires using electropolished test grids. This involves using water and CO_2 spray washes in a cleanroom.