

PLR Working!

After some details

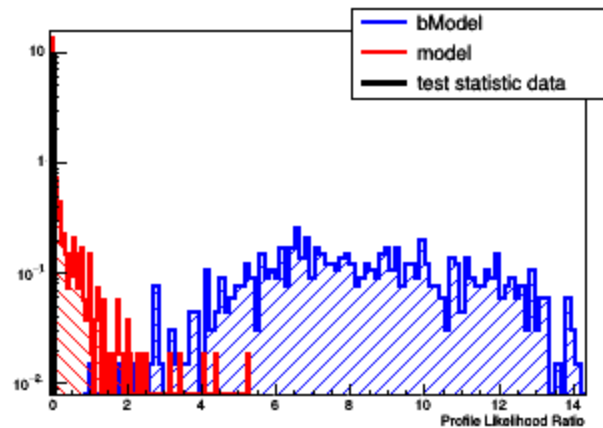
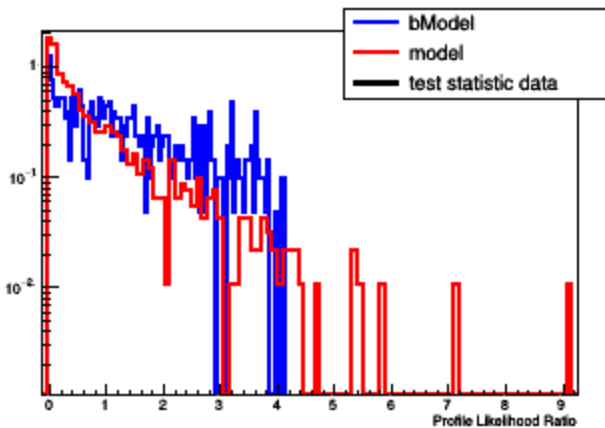
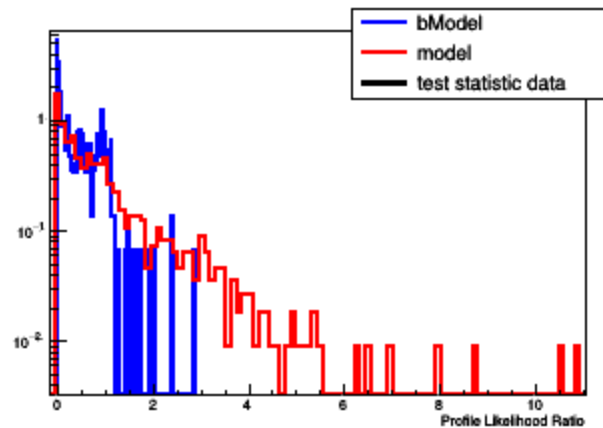
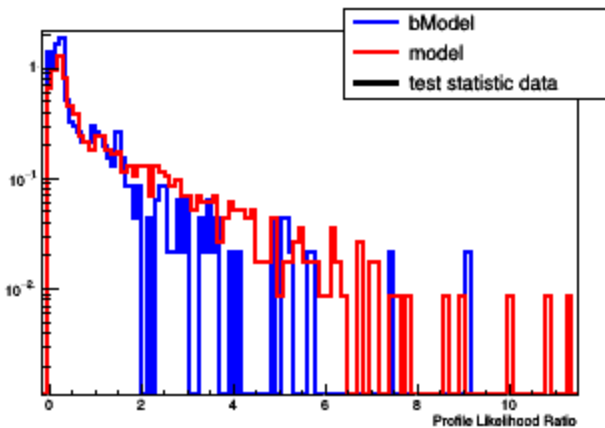
Try Operator 1 Isoscalar

Result!

Red is null hypothesis (WIMP exists with given POI)

Blue is alternative hypothesis (WIMPs do not exist)

Black is the test statistic obtained from our run.

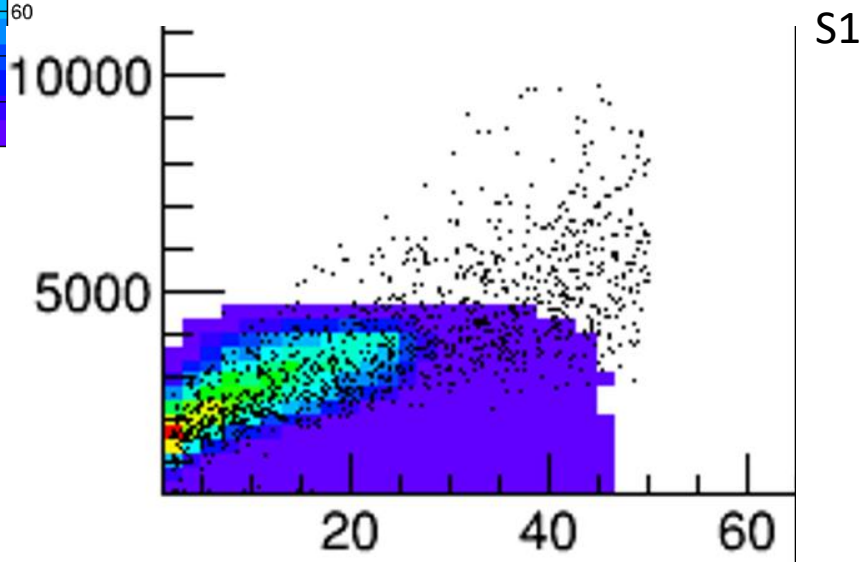
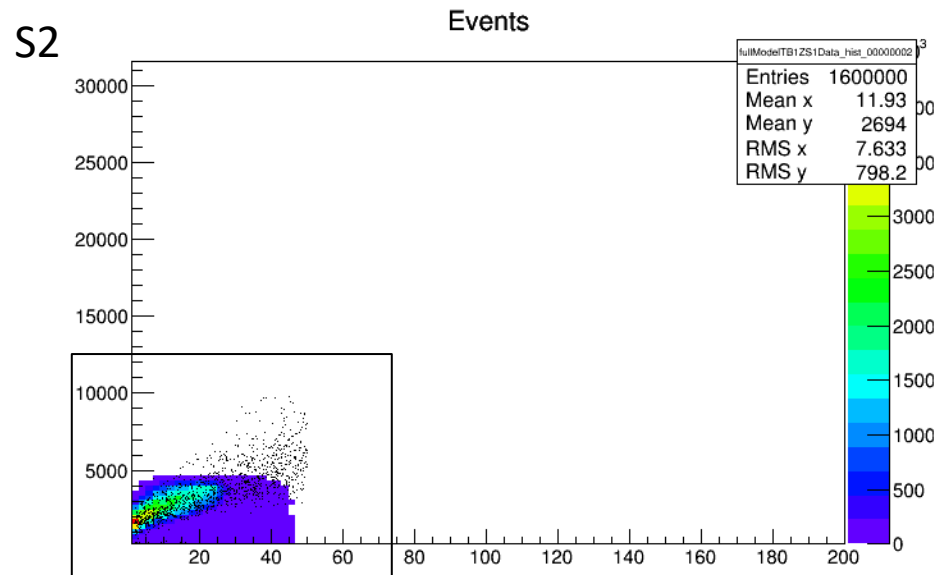
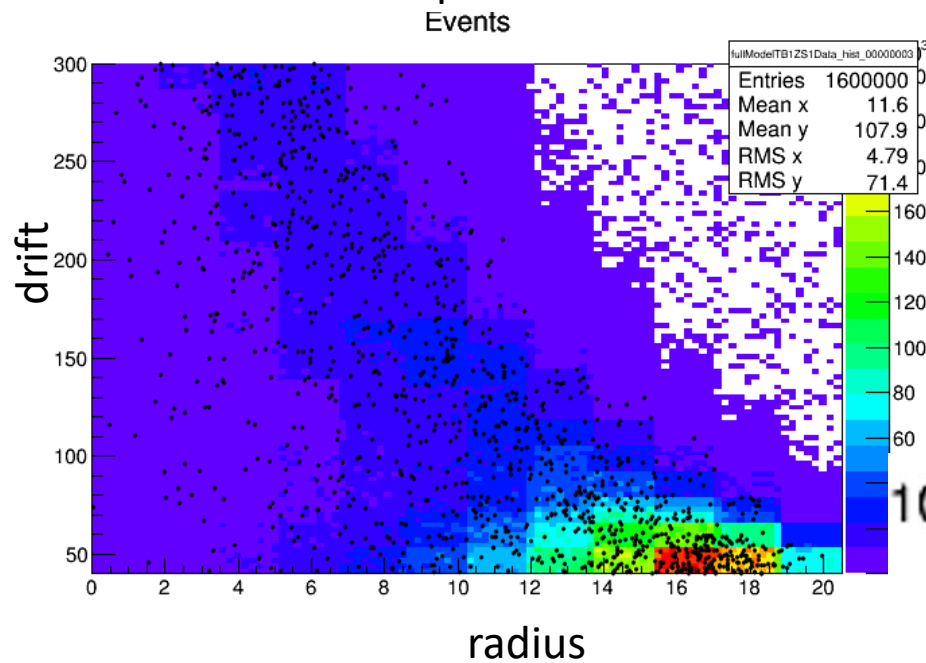


Something's wrong...

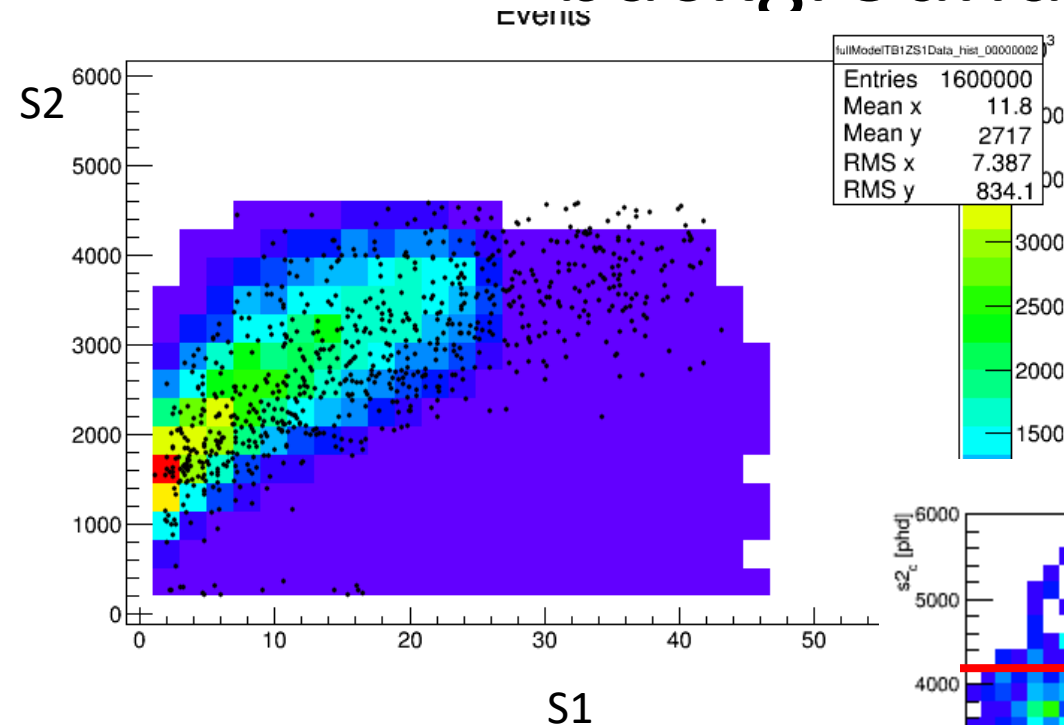
Data-model
likelihood always 0!

Model vs Data

Histogram is model,
Black points are data



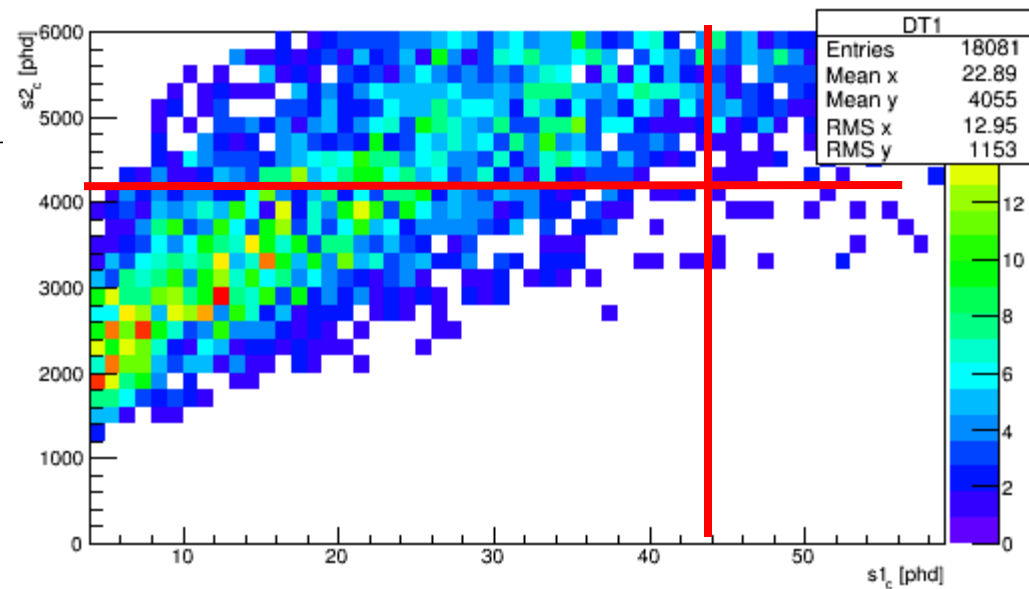
Cut data to same thresholds as background model



Stand-in dummy wall model
is included, not real wall
model

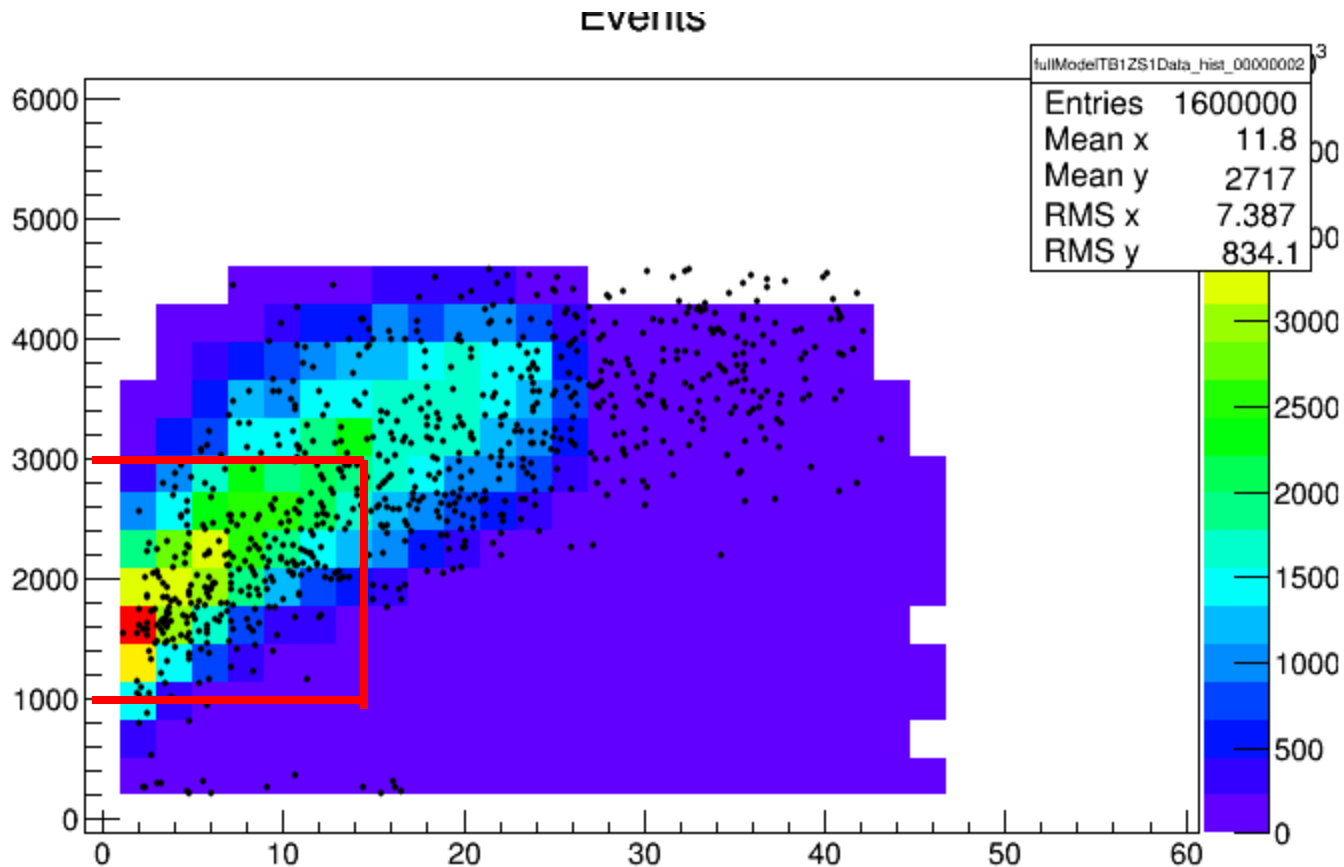
S2

Most dominant component



S1

Cut data to only a small region compatible with the model



Non-zero likelihoods!

