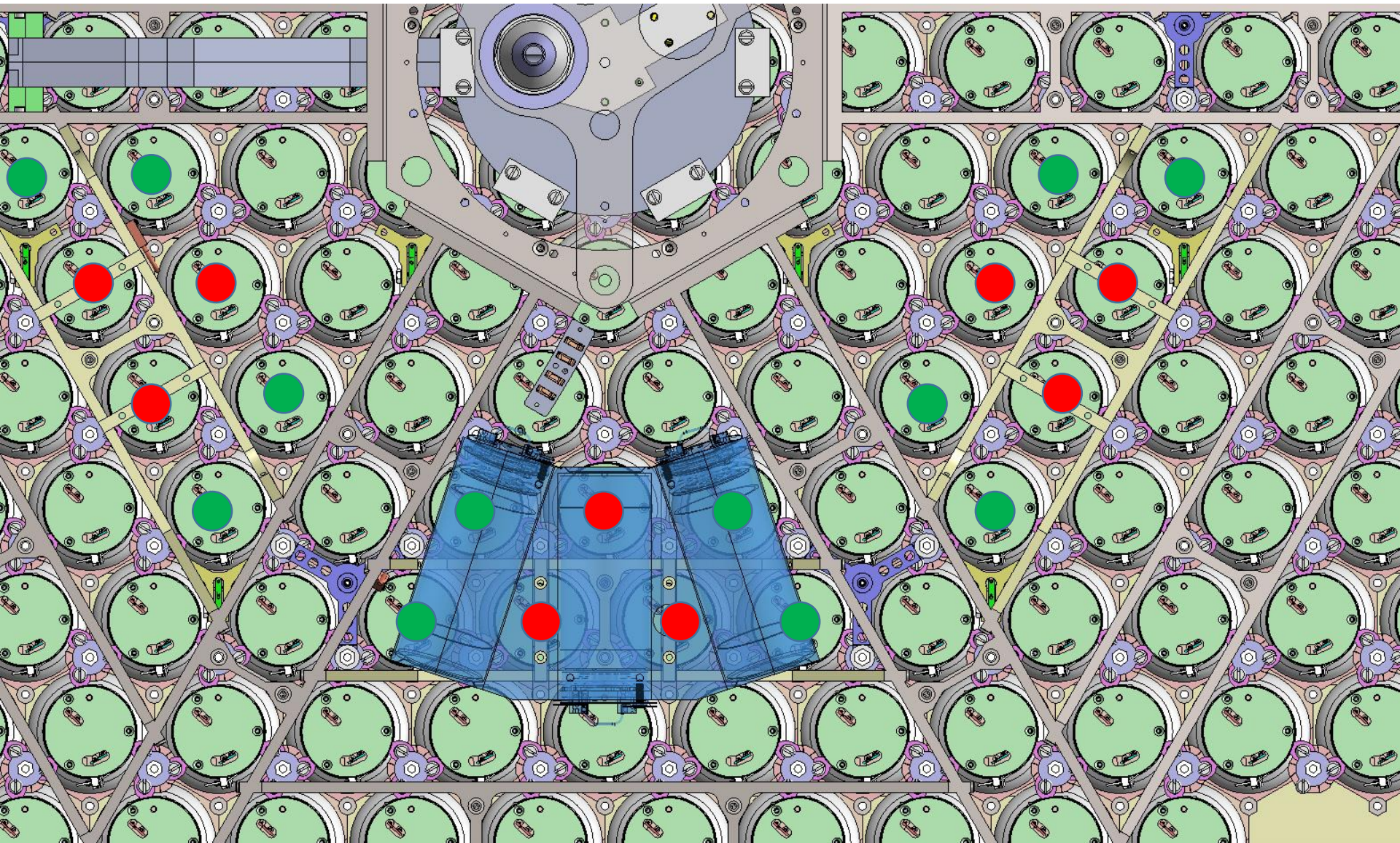


Yes, 7 pmts under each pod.

Only one pod show transparent in the view below. Five pods are turned off.

Red dots are the most difficult locations. Green dots are not as bad.

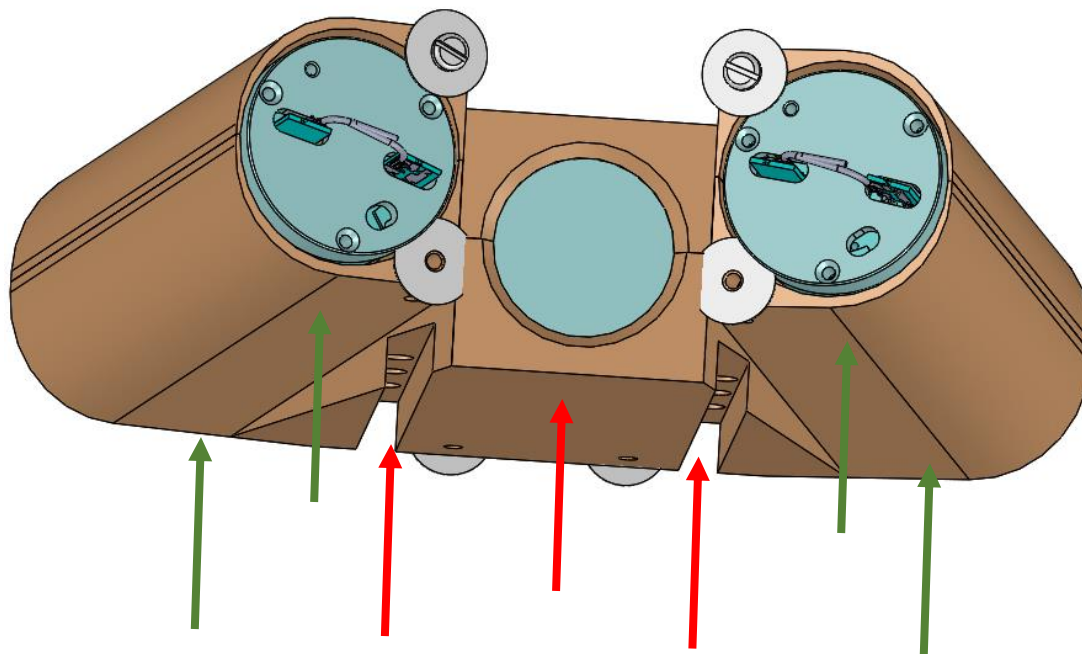
Matt Hoff LBNL  
October 17, 2018





This area of the lower truss is difficult to visual, I know. I will try and help.

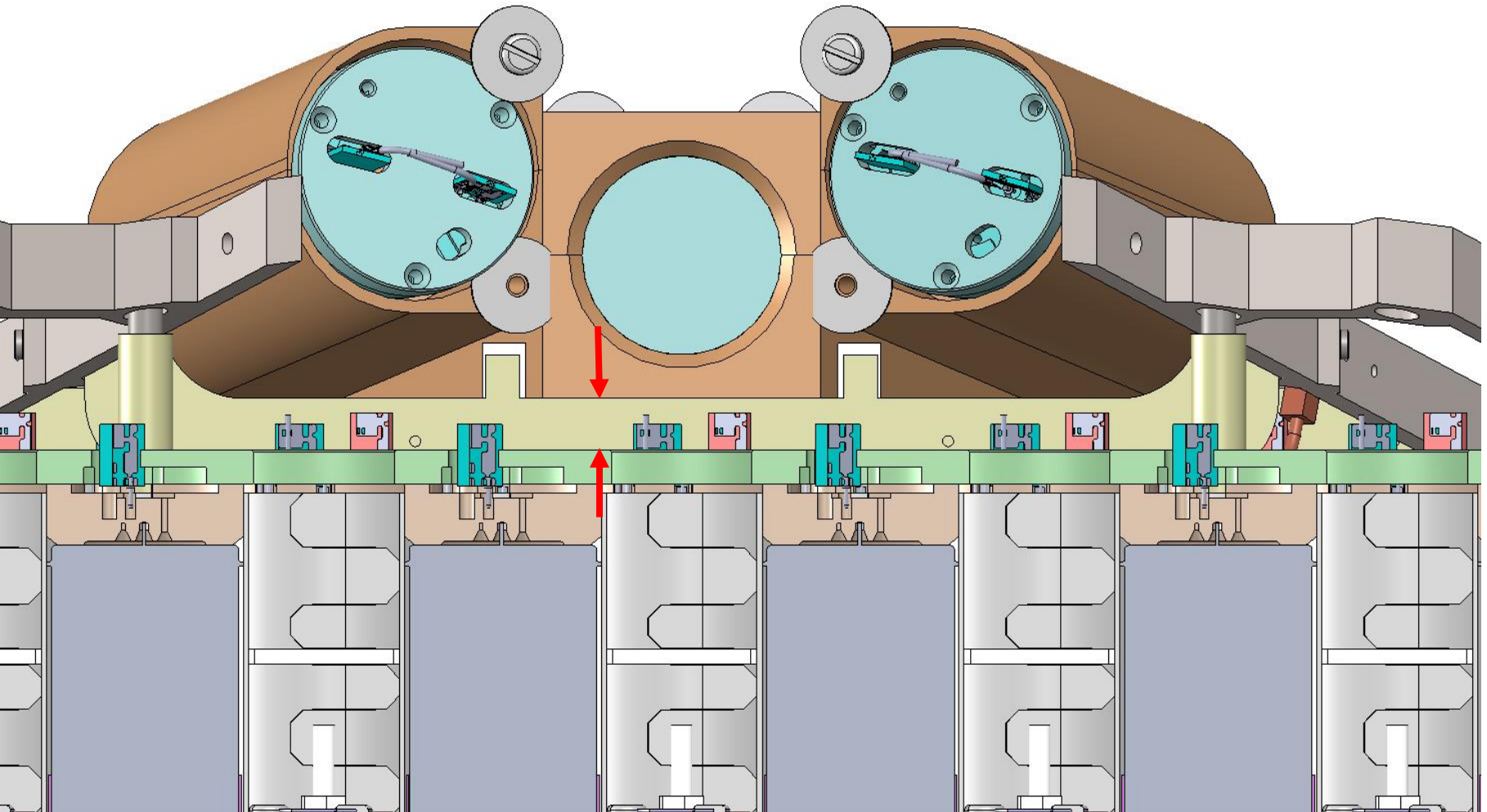
This is view of the lower inside of the pod. It is a complicated shape. The arrows show approximately where the PMTs are under the pod. The red arrows are under flat spots with the least amount of clearance. The green arrows are under curved and raised spots with more room.



## Section view looking from the inside to the outside.

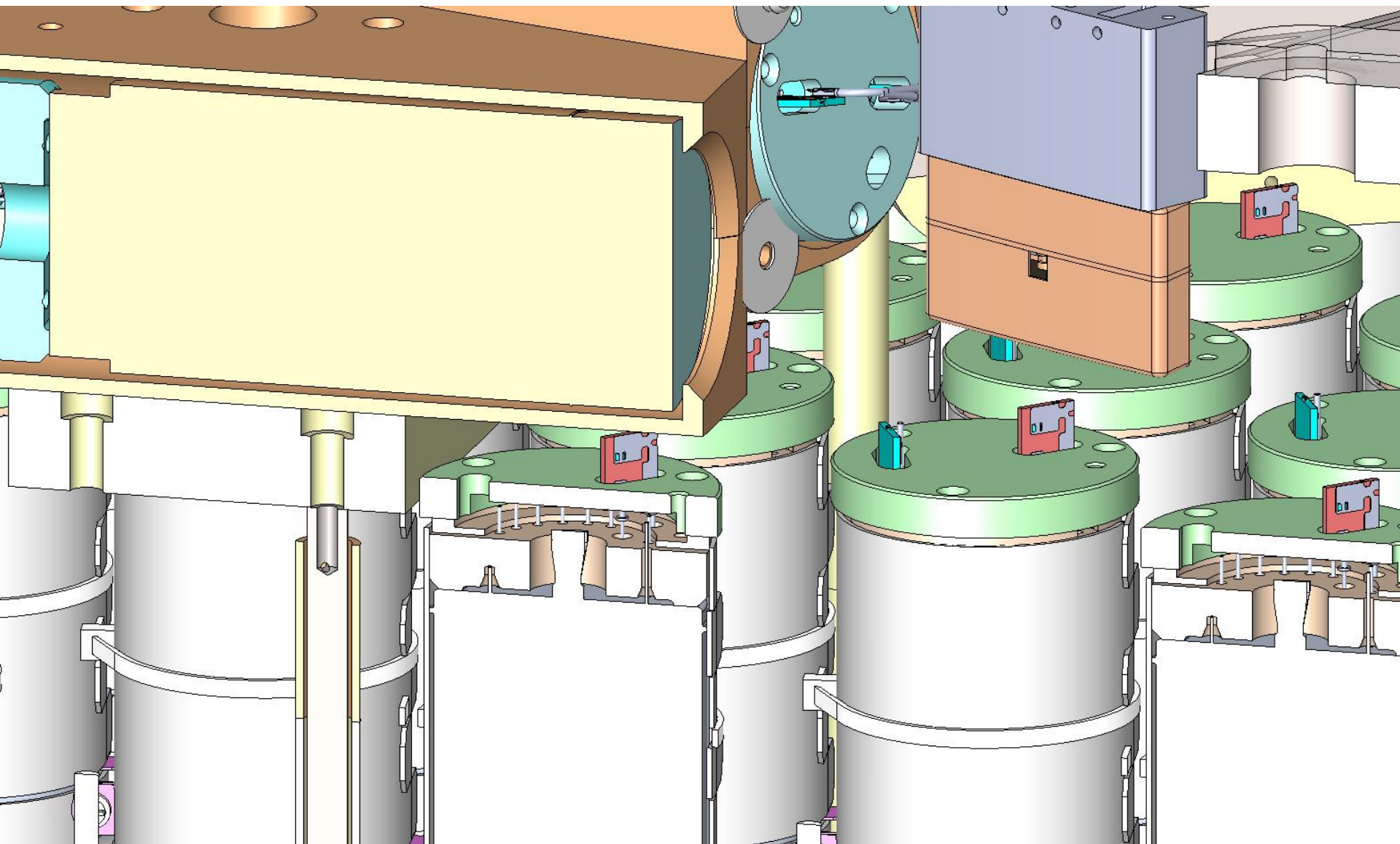
This is the worst case, 11.8mm per the CAD model between the PTFE base and the bottom of the pod. (between the red arrows)

The model shows 3.4mm between the cirlex connector piece and bottom of the pod.

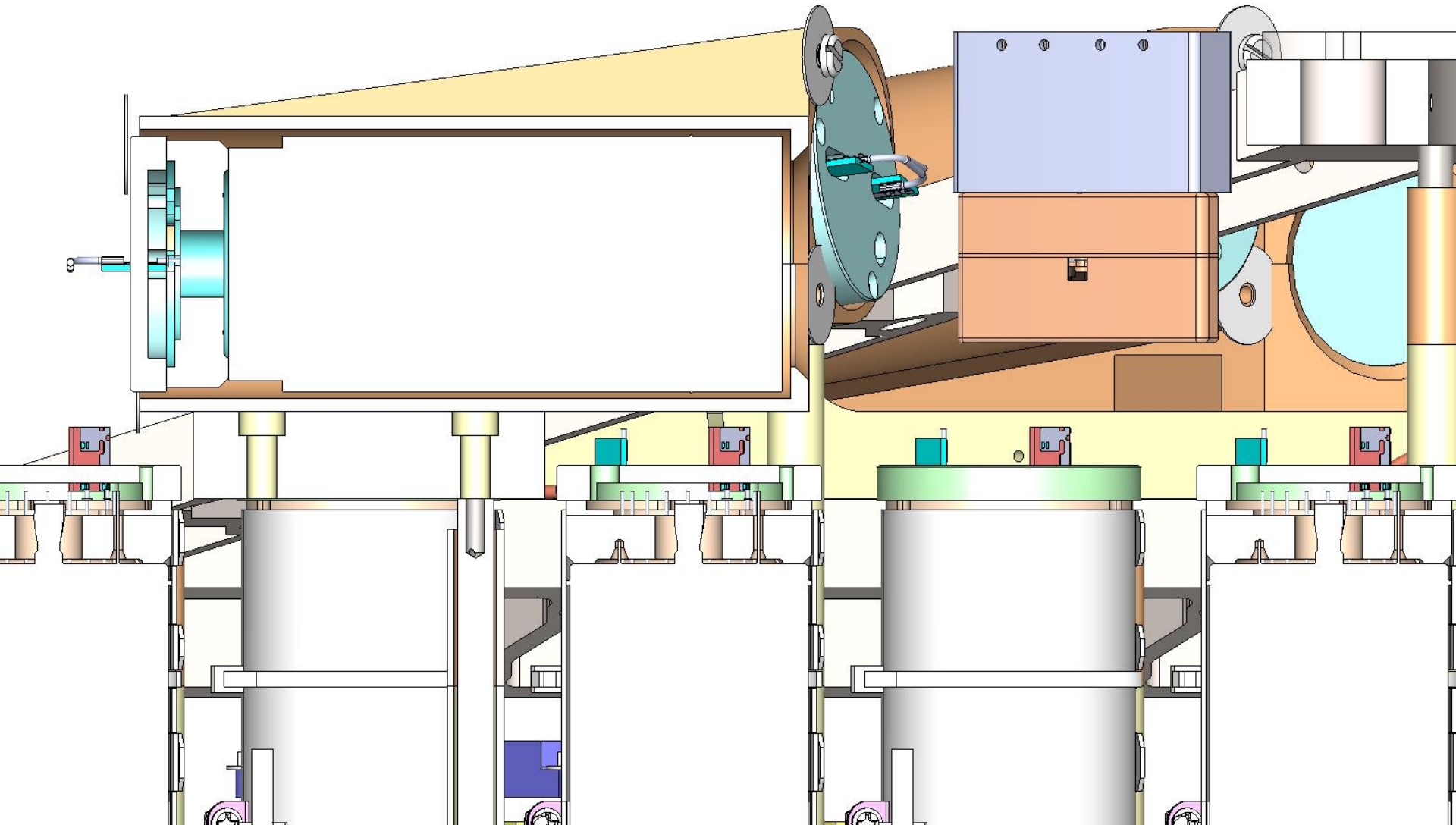


I know this is tight, but it was designed over 1.5 years ago and I did not have much space to give to this area.

Slightly angled section view through the center of a red pmt (vertical) and the center of a pod pmt (horizontal)

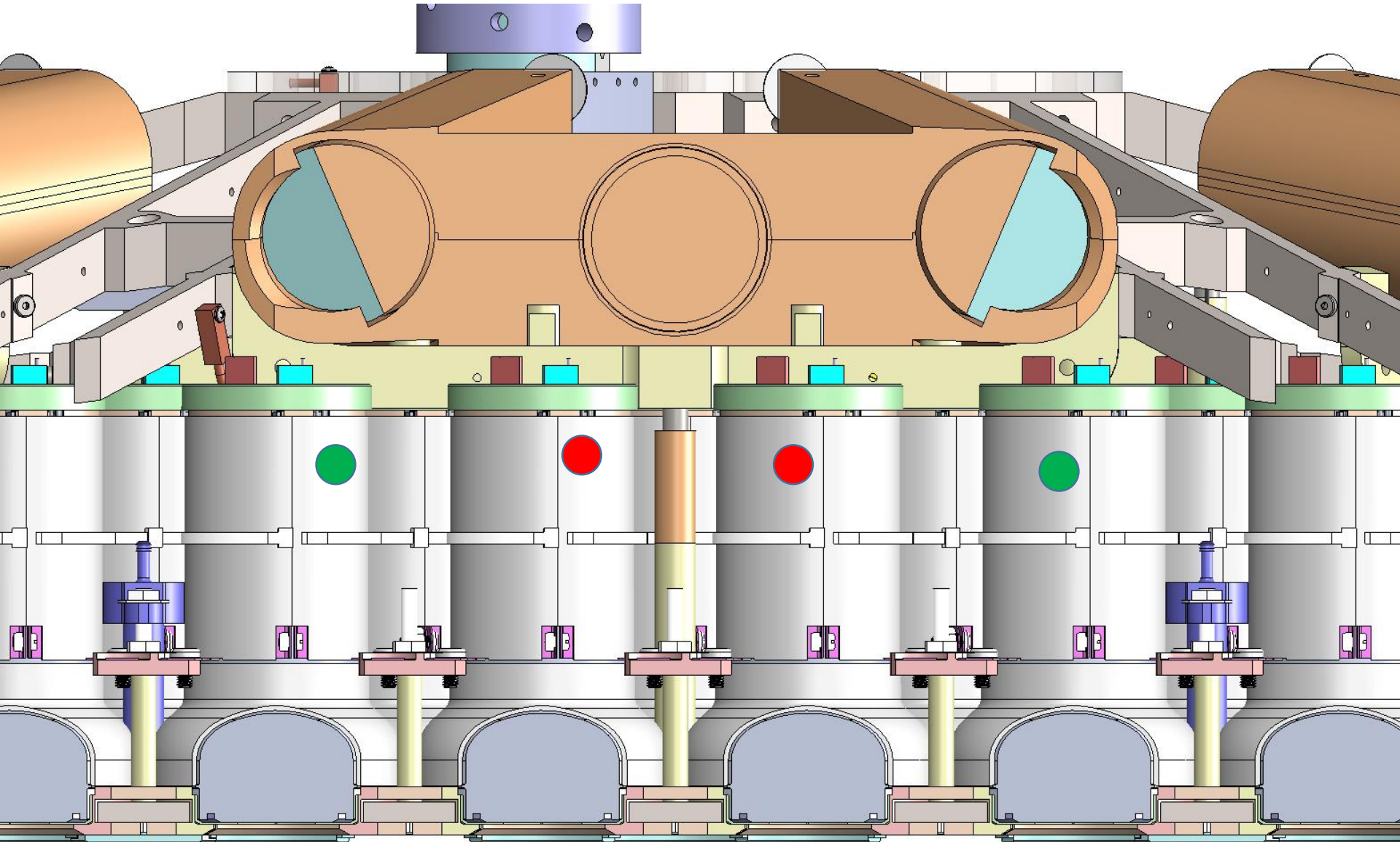


Section view through the center of a red pmt (vertical) and the center of a pod pmt (horizontal)





Section view from the outside looking in to the center.  
Red and green dots to identify tubes.



Slightly angled section view looking from the outside to the inside center.  
Red and green dots to identify tubes.

