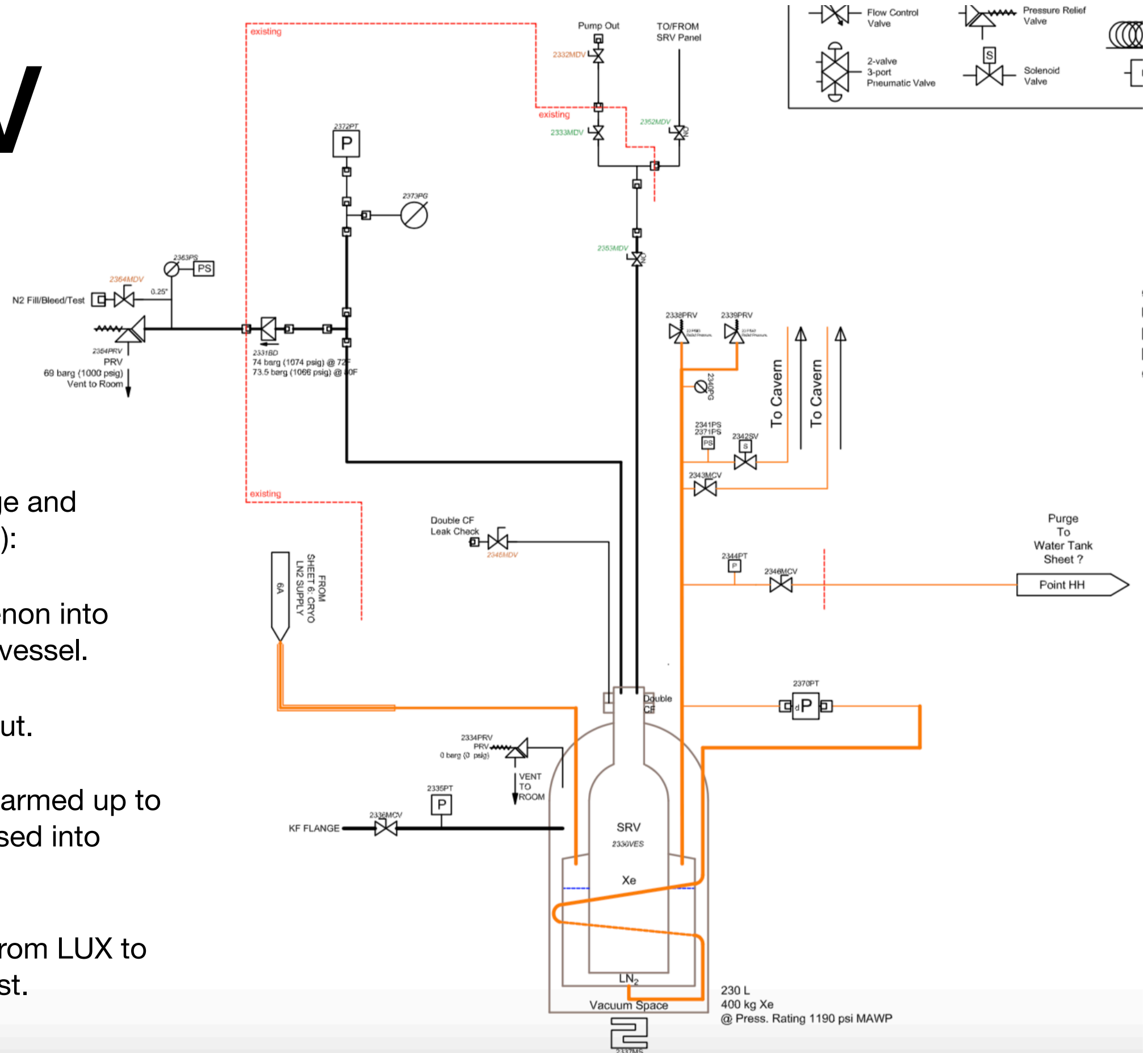


SRV work at SURF

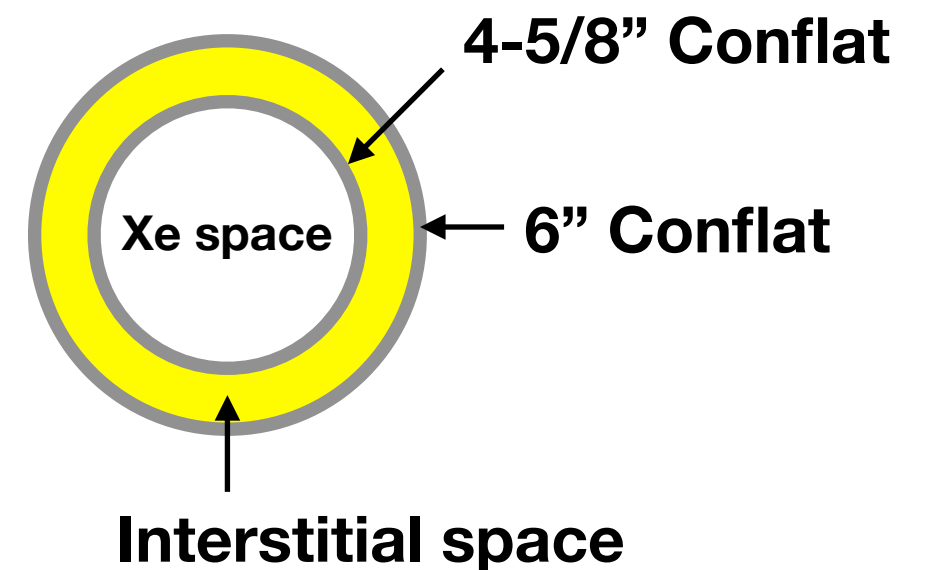
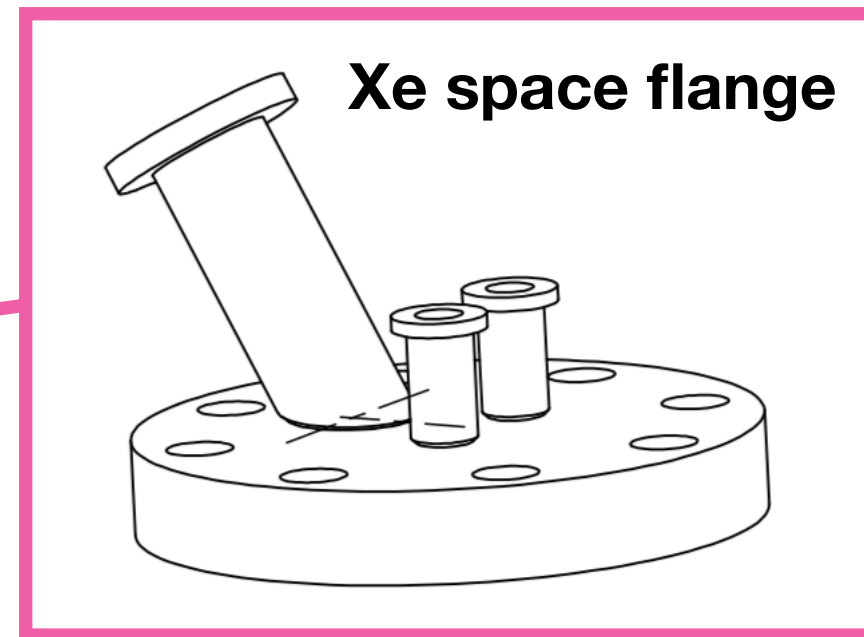
4 October 2019

SRV

- The SRV (Storage and Recovery Vessel):
 - Recovers xenon into LN2 cooled vessel.
 - Xe freezes out.
 - Xe can be warmed up to be compressed into bottles later.
- Re-configuring from LUX to LZ circulation test.



SRV interstitial space



SRV work

- Installed replacement pressure gauges and valves.
- Interstitial space:
 - Pressure test to 1300 psig.
 - Leak check Xe space (at vacuum) to see if helium leaks through 4-5/8" CF.
 - Sniffer outer seal to see if helium leaks through 6" CF.
 - Verify sniffer results with normal leak check on interstitial space.
 - 1/4" NPT fitting into the flange is leakiest.
- Xe space:
 - Pumped out.
 - Attempted 15 psig pressure test. Broken gauge thwarted this work.

