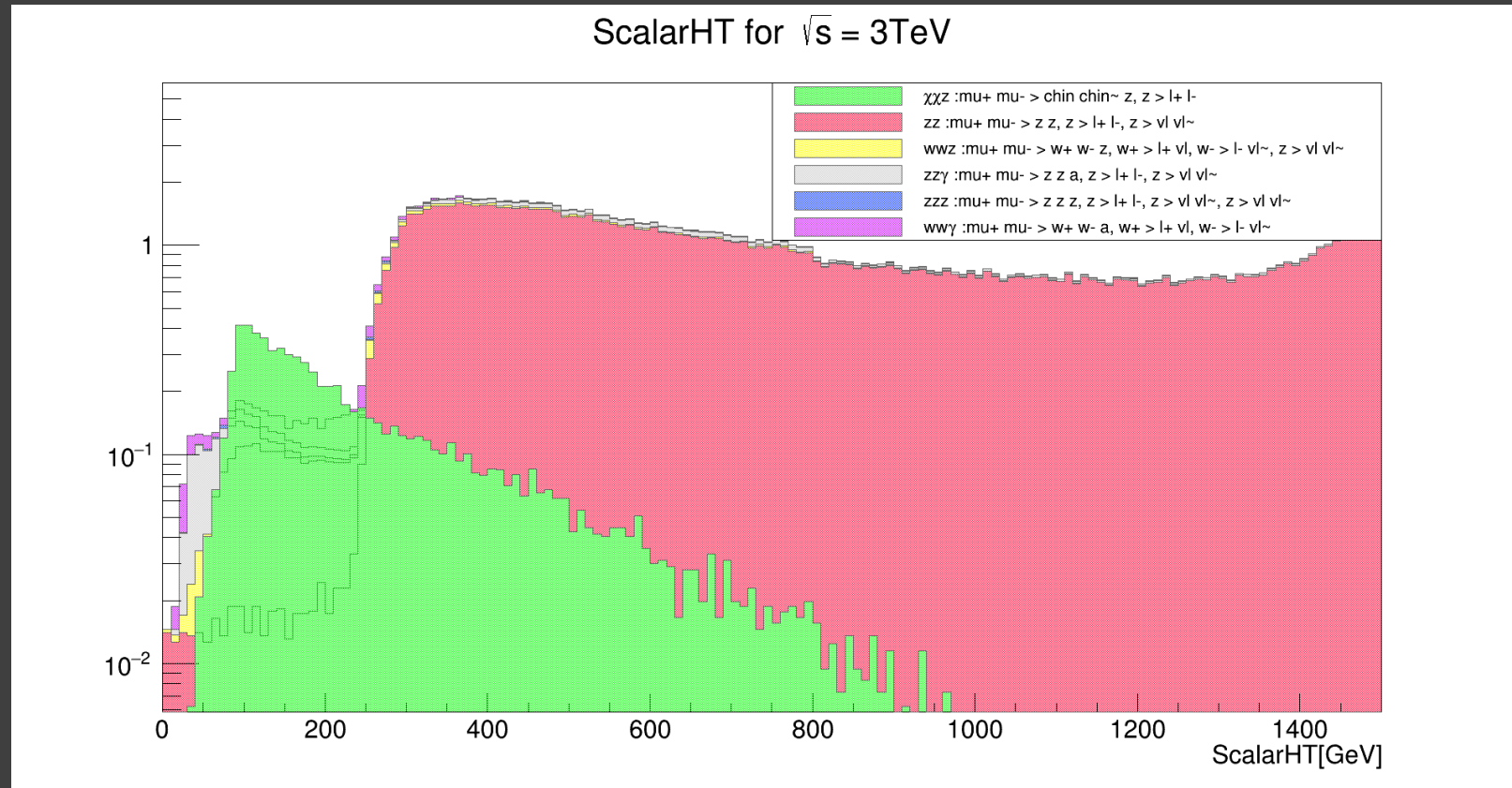


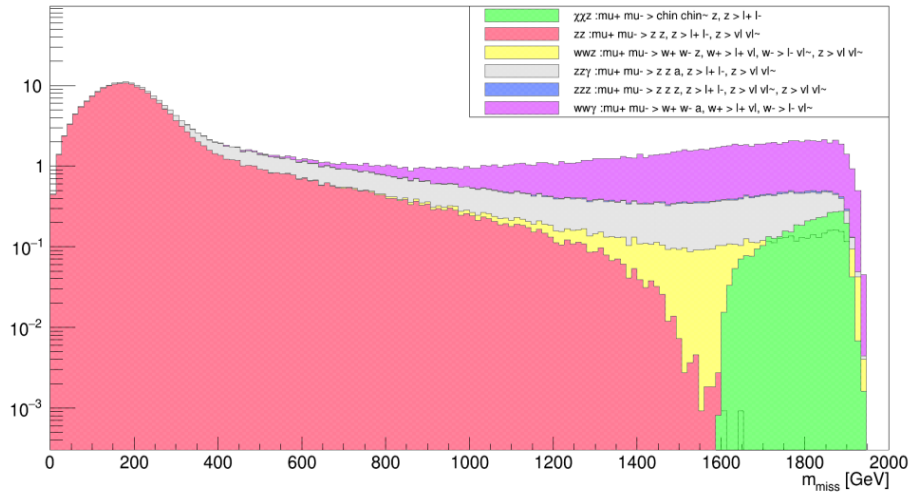
Scalar sum of transverse momenta and energy of all reconstructed objects



Missing Mass

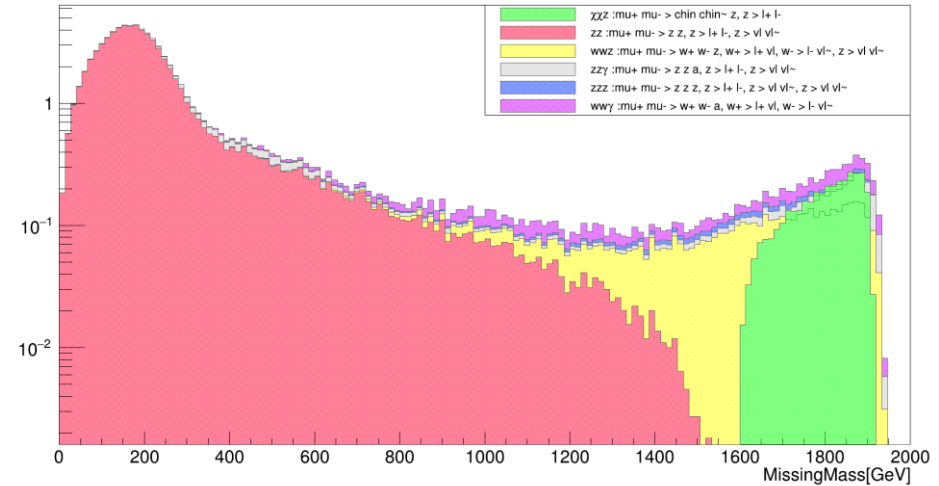
- Selection: $HT < 0.2\sqrt{s}$

MissingMass for $\sqrt{s} = 2\text{TeV}$



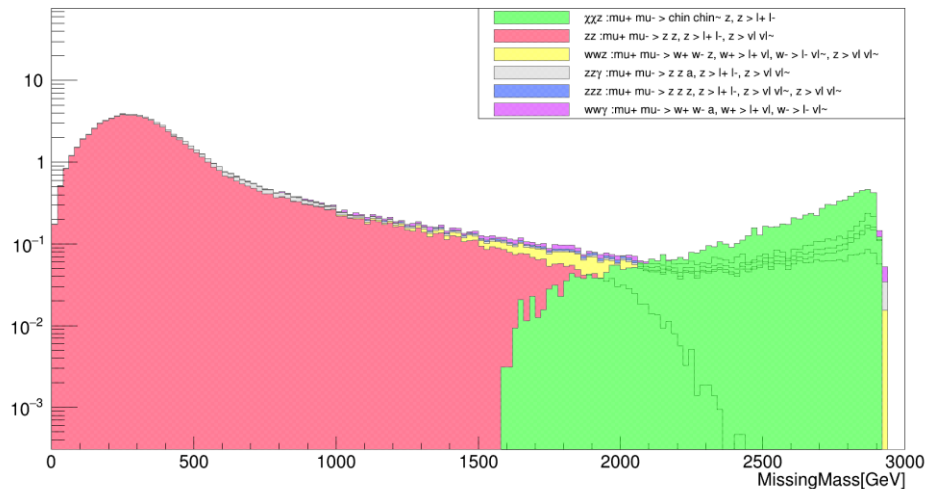
Without cut

MissingMass for $\sqrt{s} = 2\text{TeV}$

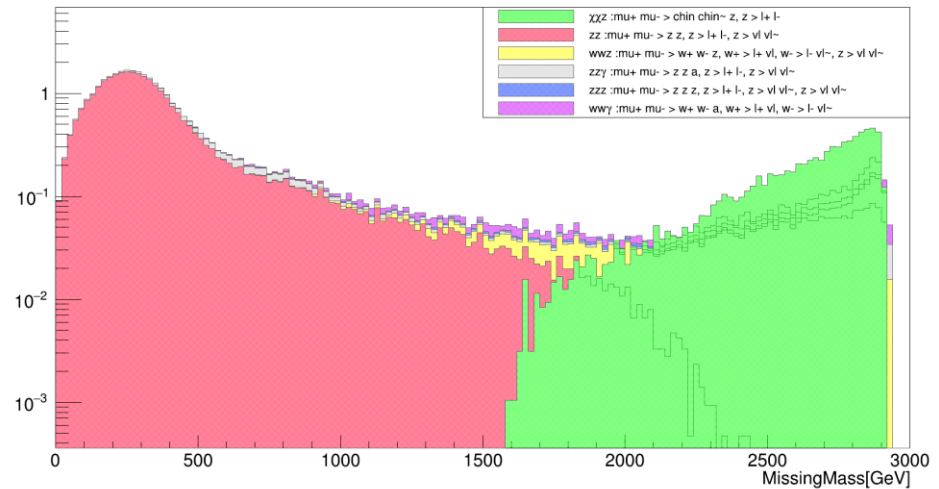


With cut

MissingMass for $\sqrt{s} = 3\text{TeV}$



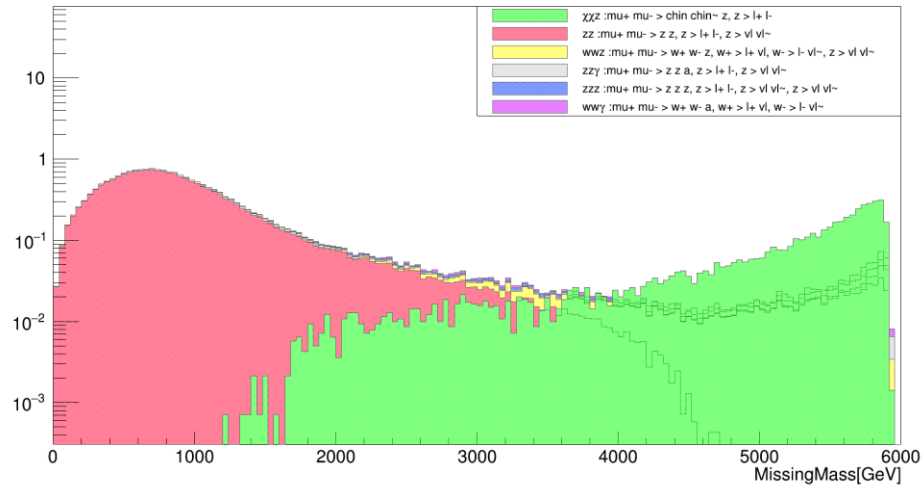
MissingMass for $\sqrt{s} = 3\text{TeV}$



Missing Mass

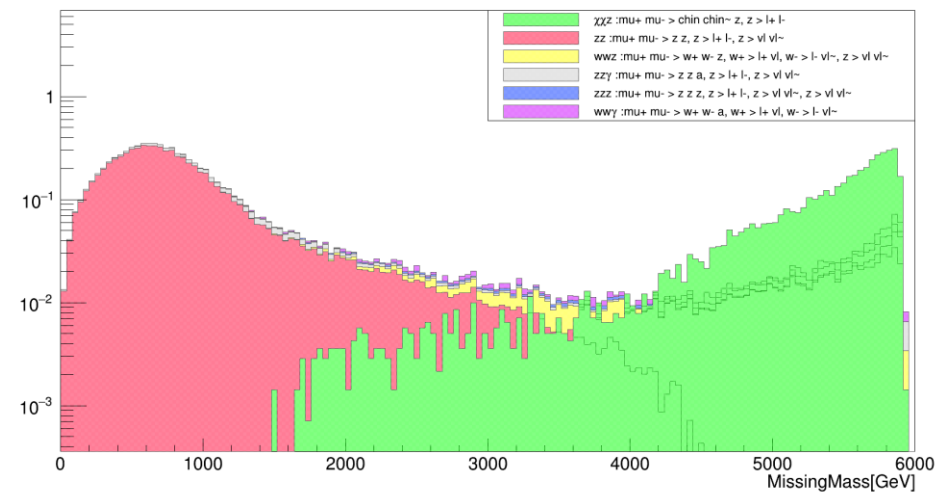
- Selection: $HT < 0.2\sqrt{s}$

MissingMass for $\sqrt{s} = 6\text{TeV}$



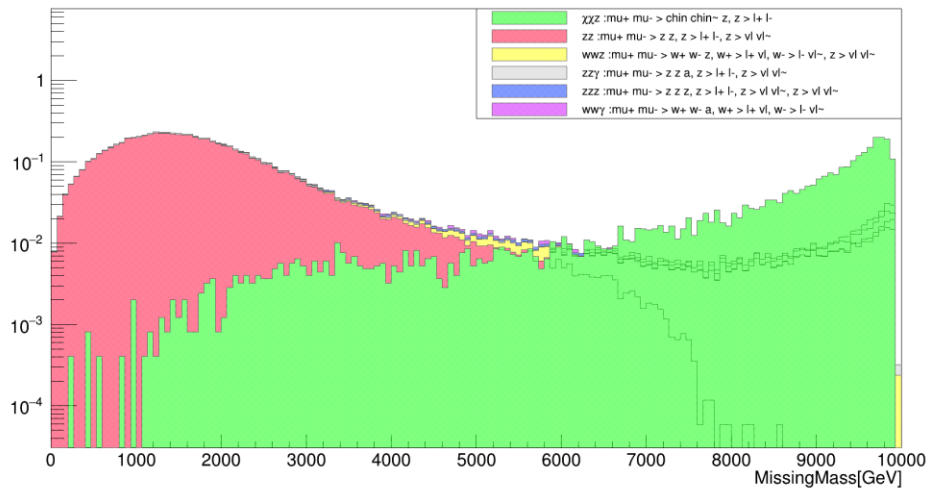
Without cut

MissingMass for $\sqrt{s} = 6\text{TeV}$

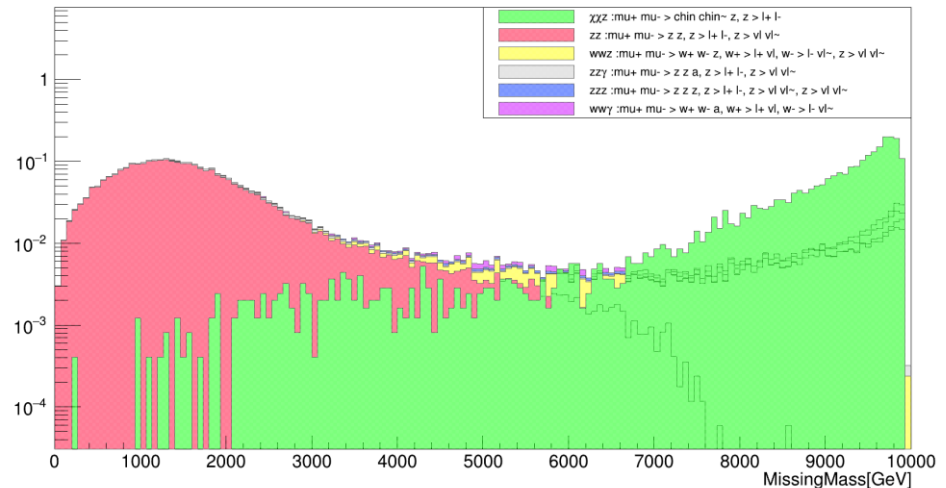


With cut

MissingMass for $\sqrt{s} = 10\text{TeV}$



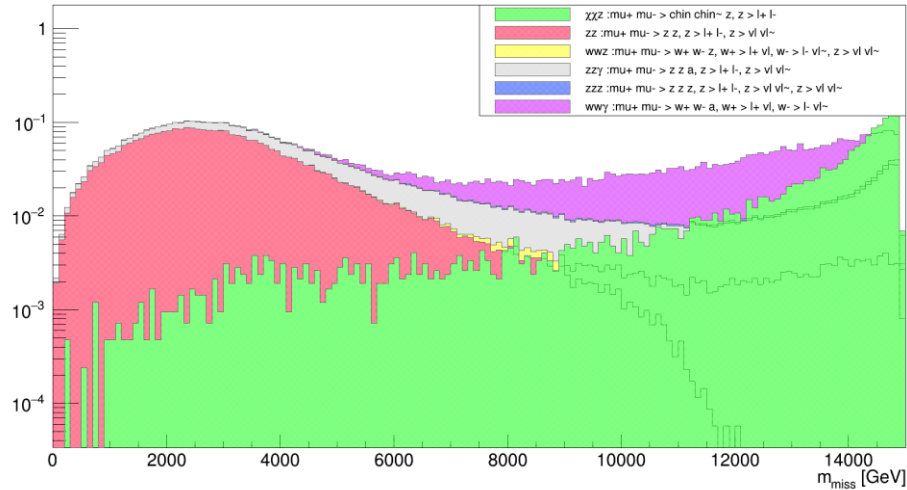
MissingMass for $\sqrt{s} = 10\text{TeV}$



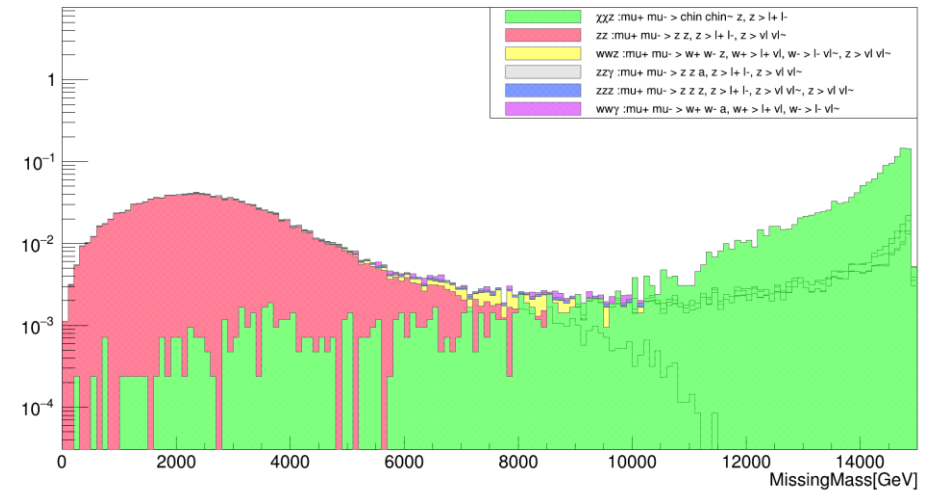
Missing Mass

- Selection: $HT < 0.2\sqrt{s}$

MissingMass for $\sqrt{s} = 15\text{TeV}$

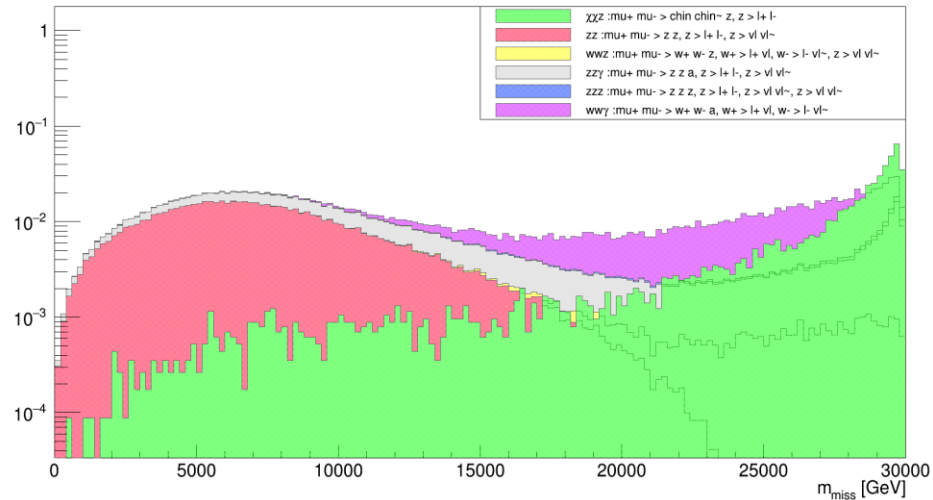


MissingMass for $\sqrt{s} = 15\text{TeV}$



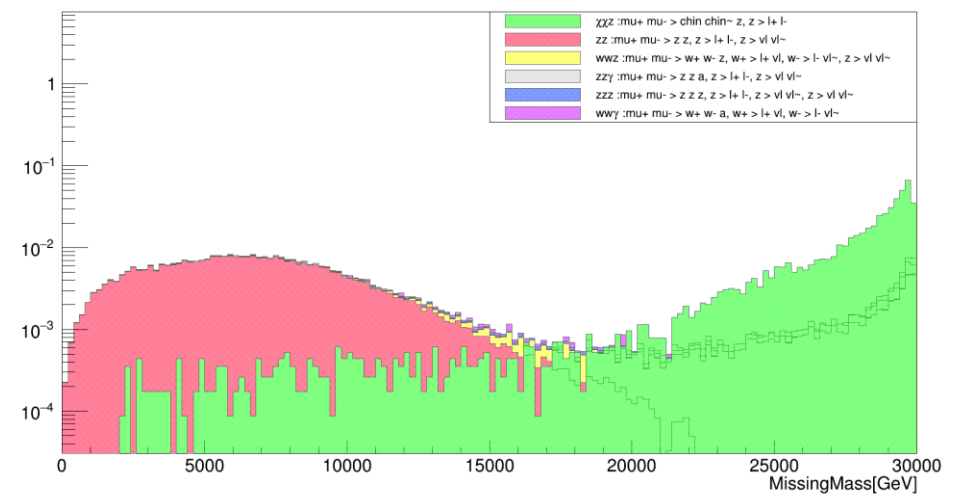
Without cut

MissingMass for $\sqrt{s} = 30\text{TeV}$



With cut

MissingMass for $\sqrt{s} = 30\text{TeV}$

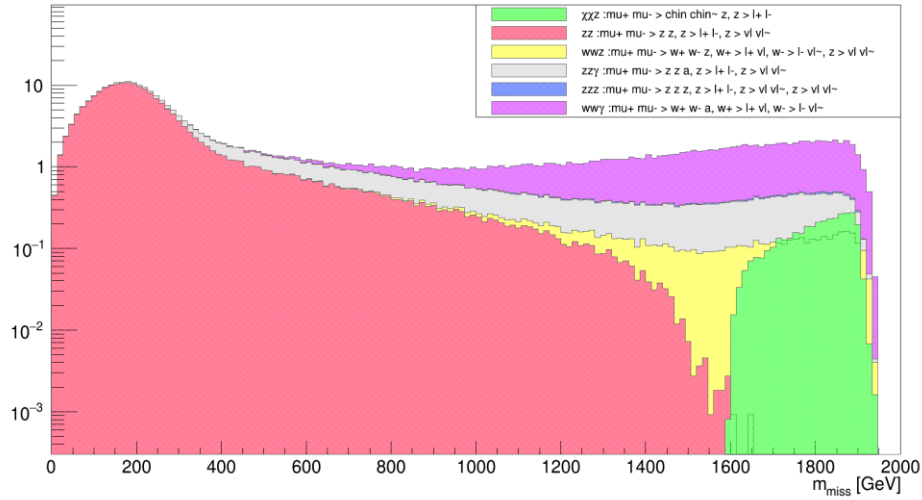




Missing Mass

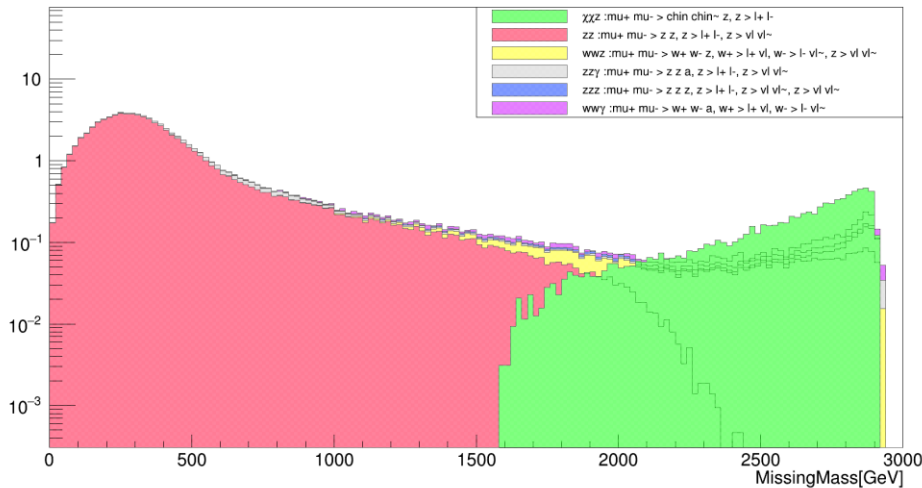
- Selection: $HT < 0.1\sqrt{s}$

MissingMass for $\sqrt{s} = 2\text{TeV}$

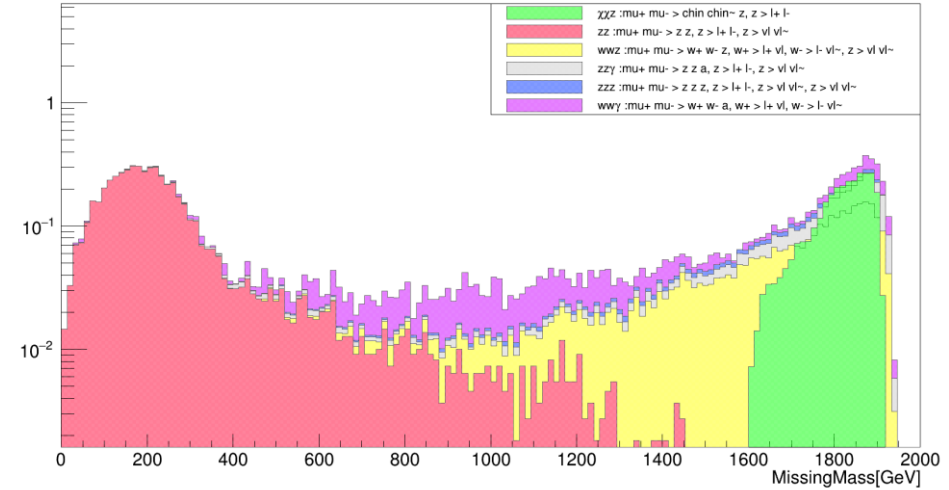


Without cut

MissingMass for $\sqrt{s} = 3\text{TeV}$

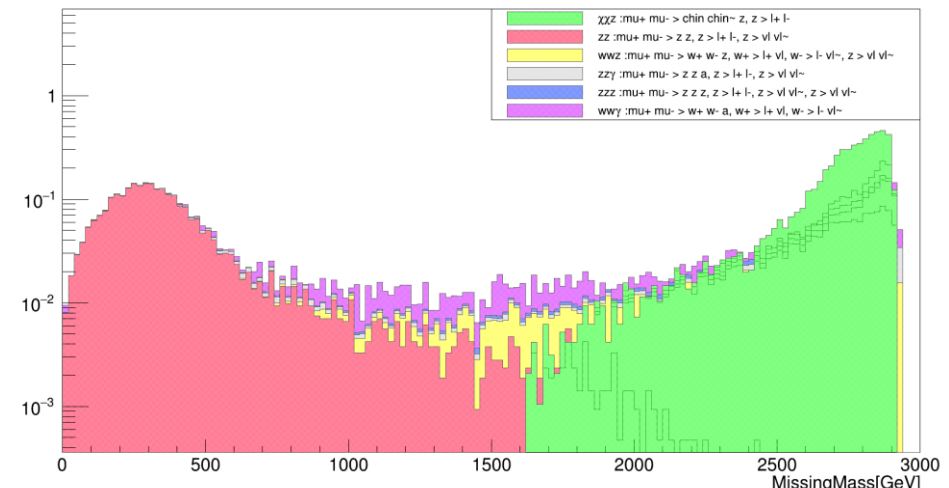


MissingMass for $\sqrt{s} = 2\text{TeV}$



With cut

MissingMass for $\sqrt{s} = 3\text{TeV}$

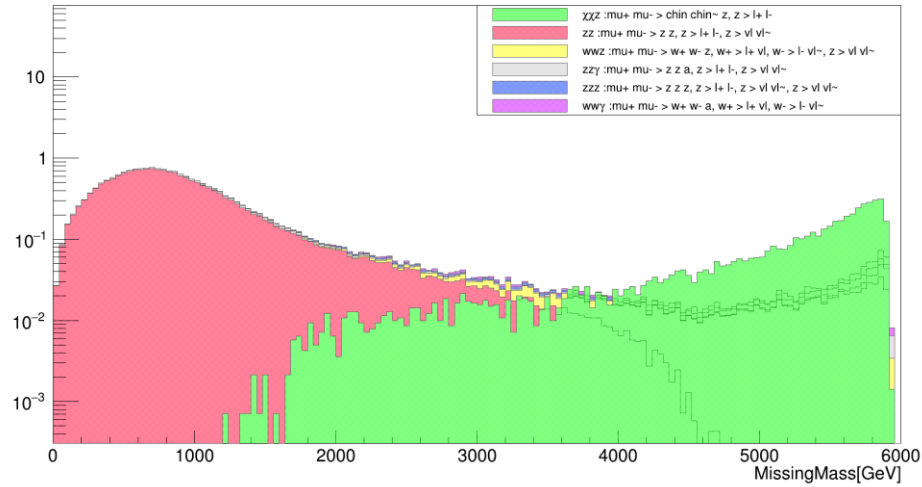




Missing Mass

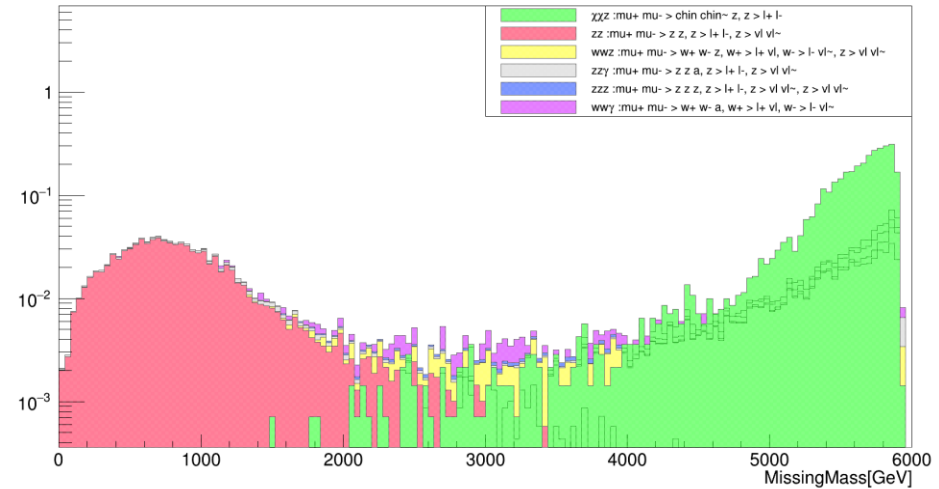
- Selection: $HT < 0.1\sqrt{s}$

MissingMass for $\sqrt{s} = 6\text{TeV}$



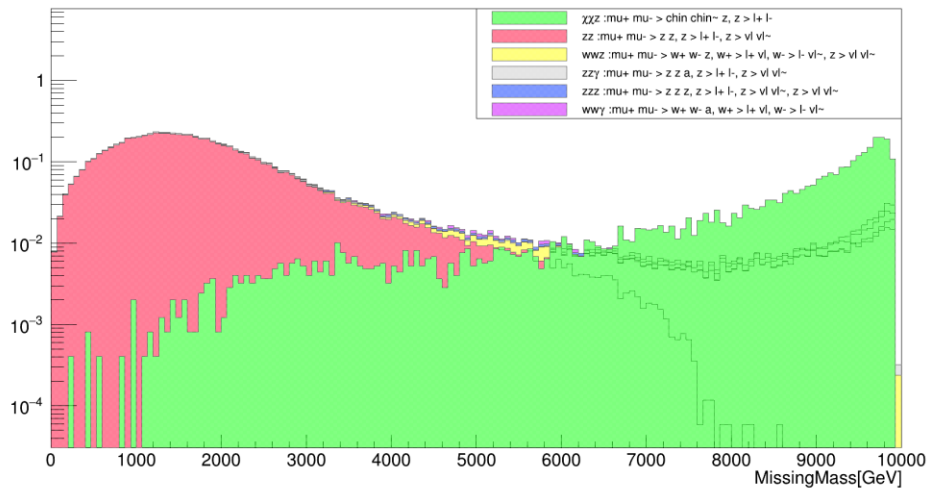
Without cut

MissingMass for $\sqrt{s} = 6\text{TeV}$

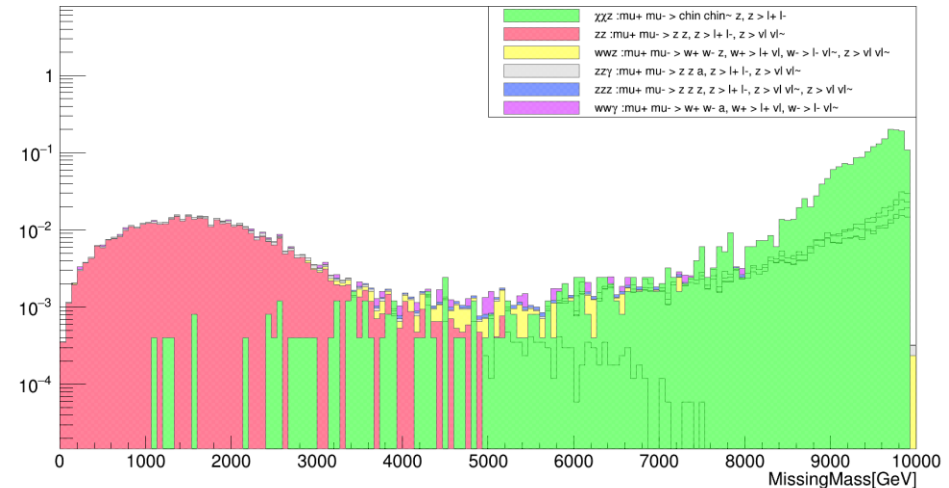


With cut

MissingMass for $\sqrt{s} = 10\text{TeV}$



MissingMass for $\sqrt{s} = 10\text{TeV}$

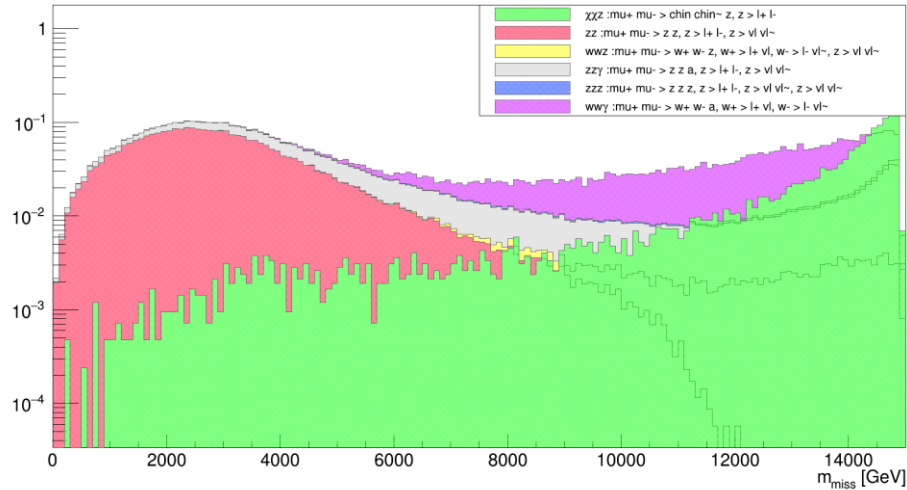




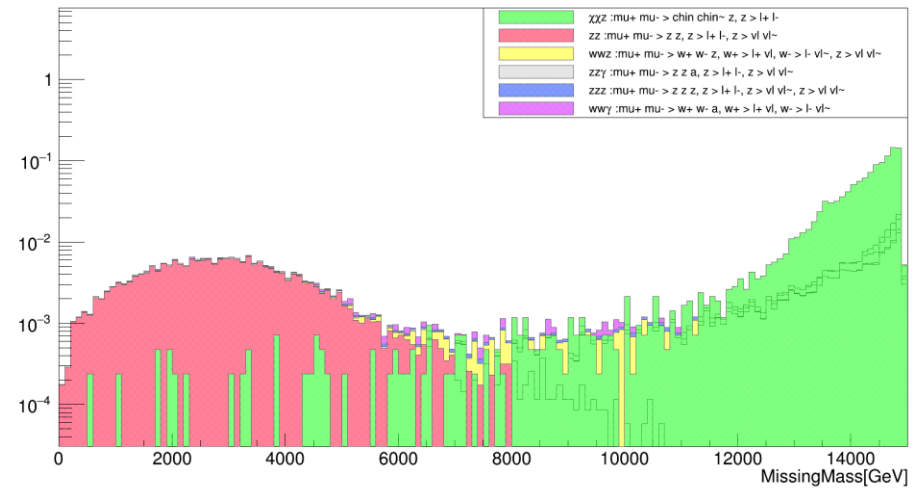
Missing Mass

- Selection: $HT < 0.1\sqrt{s}$

MissingMass for $\sqrt{s} = 15\text{TeV}$

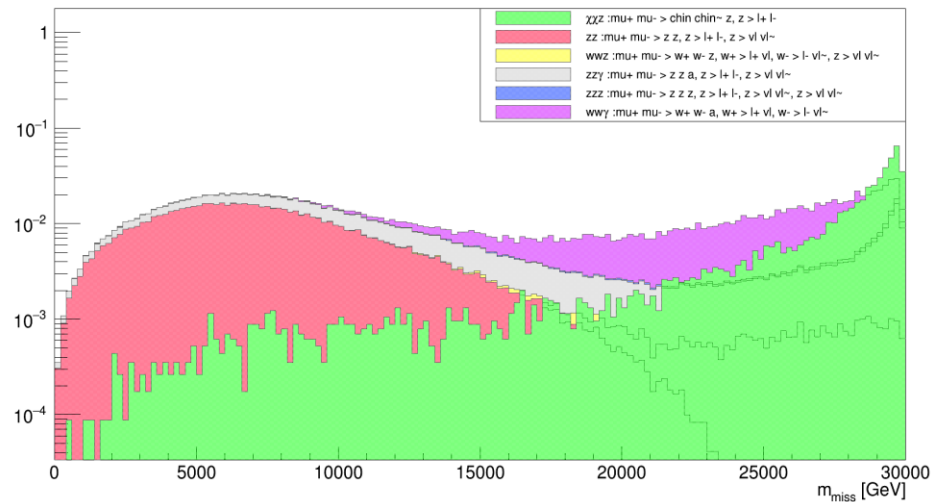


MissingMass for $\sqrt{s} = 15\text{TeV}$



Without cut

MissingMass for $\sqrt{s} = 30\text{TeV}$



With cut

MissingMass for $\sqrt{s} = 30\text{TeV}$

