

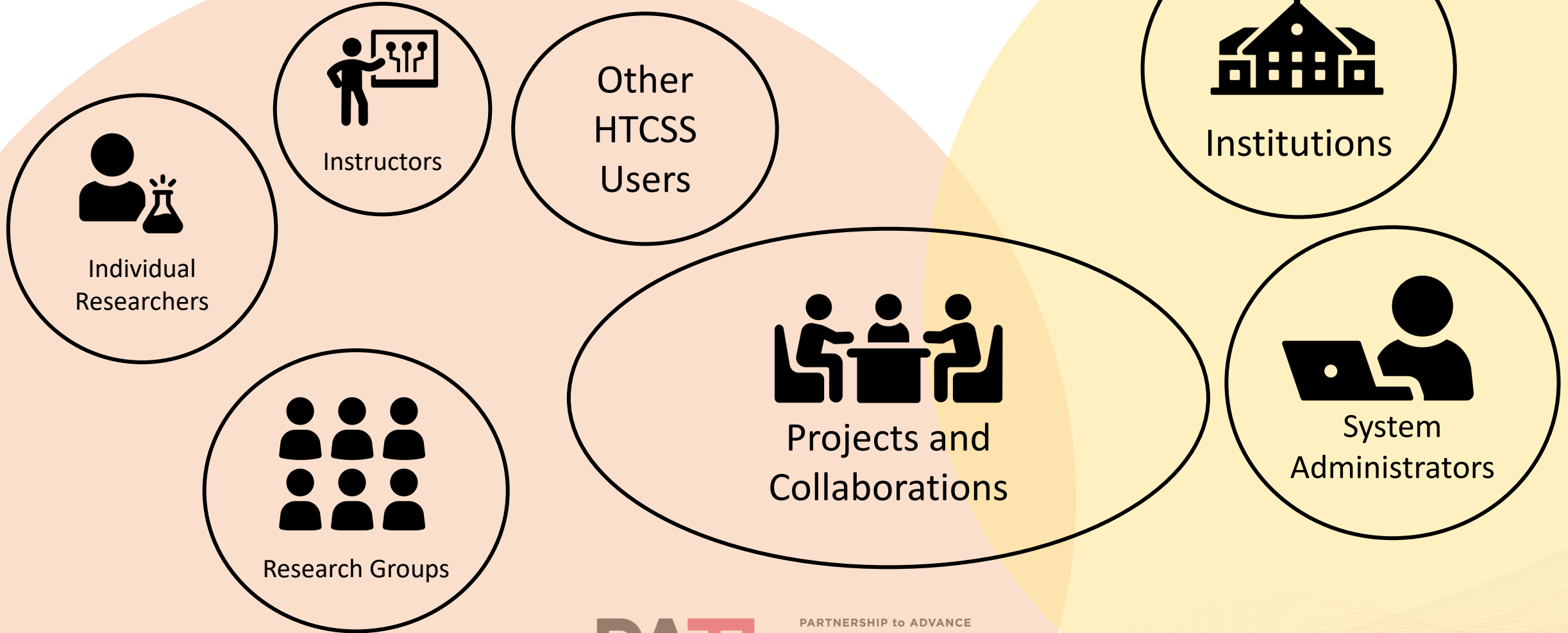
Developing an HTCommunity

Christina Koch

Research Computing Facilitation Lead, PATH/OSG

Throughput Computing 2024

Who is Our Community?



Community Activities

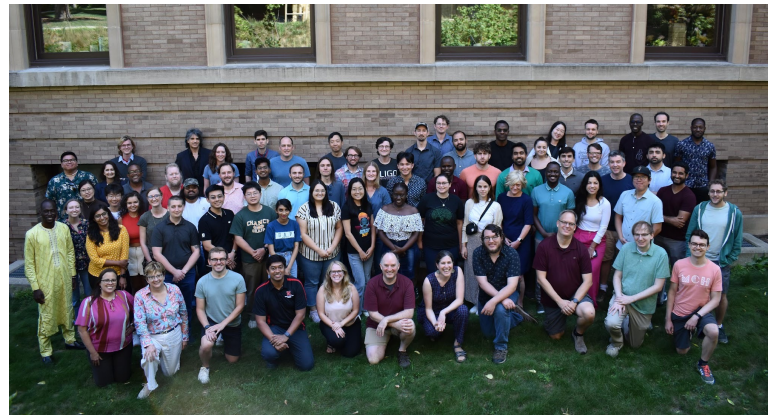
7/8/24

A Team Effort

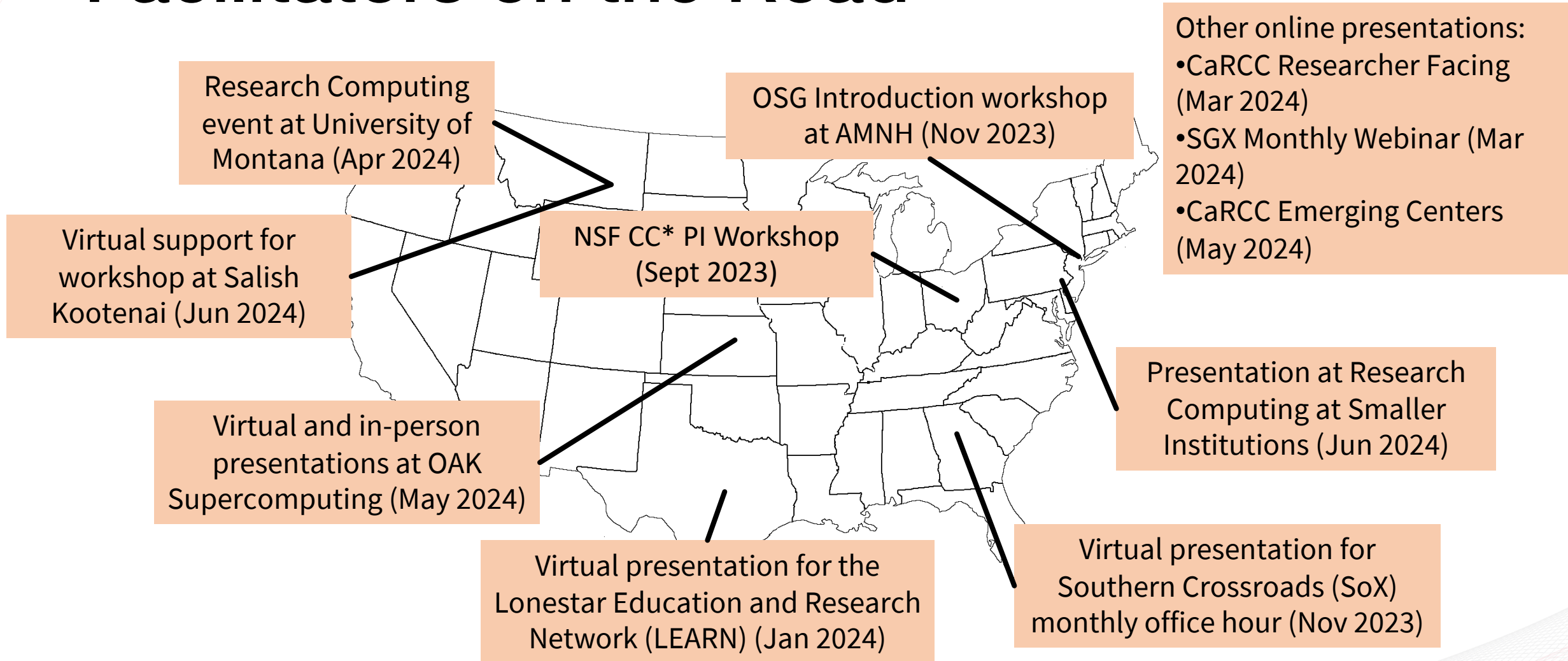
- **Campus Services:** creating space for campuses to talk
- **Collaborations:** connecting small- to mid-size collaborations
- **Facilitation:** training, joining national-scale community events
- **HTCSS:** mailing lists, community conferences like HTC24
- **Project Office:** communications, stories, events
- **GIL:** research on behalf of the broader community
- **Production Services / Security:** keep infrastructure going!

Community Building and Outreach

- One-on-one Engagement: consultations and office hours
- User Training: monthly training, annual OSG School
- Communication Channels: mailing lists, website stories
- Community Events: Campus Meet-Up, Collaborations Call, HTC24



Facilitators on the Road



OSPool Advisory Group

- Two-way flow of information: getting feedback from the community
- Six members; meeting quarterly
- Topics have included:
 - How to find the information you need to run jobs
 - How to gather or view information about jobs and failures
 - Improvements to training descriptions
 - Next steps after the OSG School



Research Community



Supporting Courses and Workshops

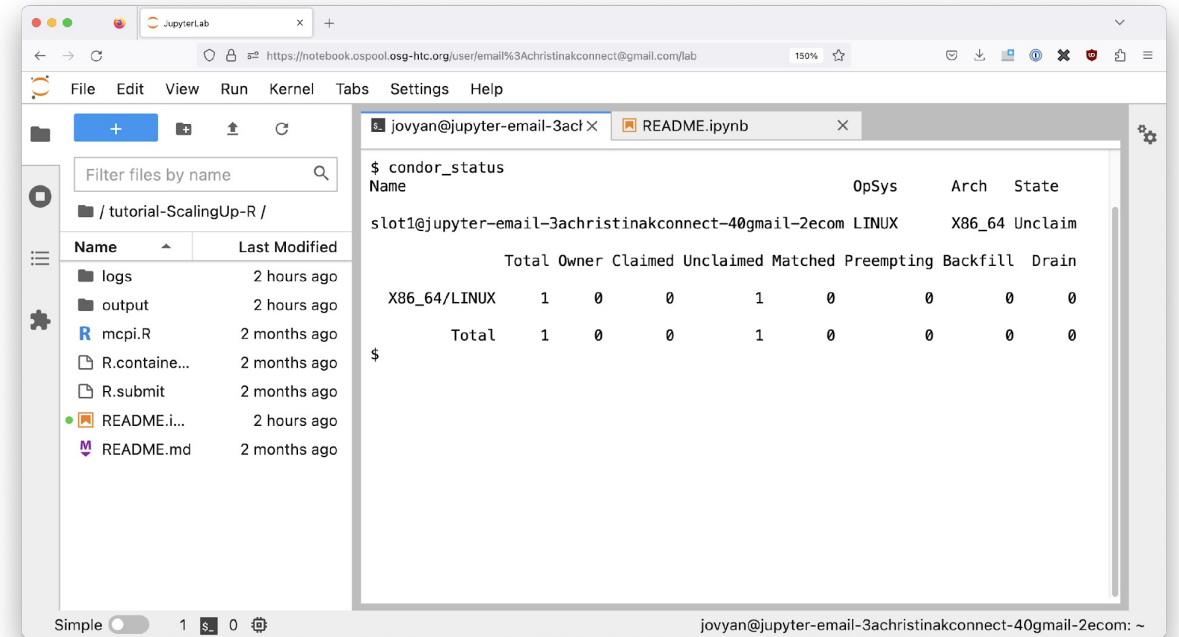
- Examples
 - Computing courses
 - Workshop at Salish Kootenai College
 - International Physics School
- Why use the OSPool?
 - Hands-on computing experience
 - Teach students at multiple sites/institutions
 - Work with real data or research workflows



https://portal.osg-htc.org/documentation/support_and_training/training/ospool_for_education/

OSPool Notebooks

- Access an HTC resource with just a browser
- Can be used with or without a full OSPool account
- Perfect for training or courses.



<https://notebook.ospool.osg-htc.org>

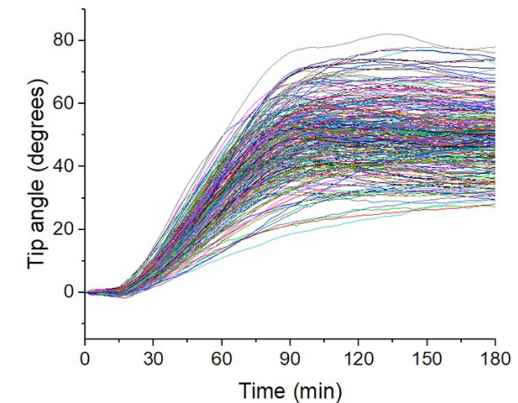
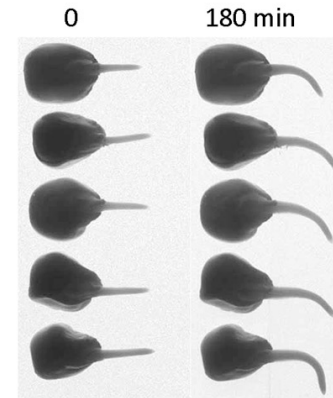
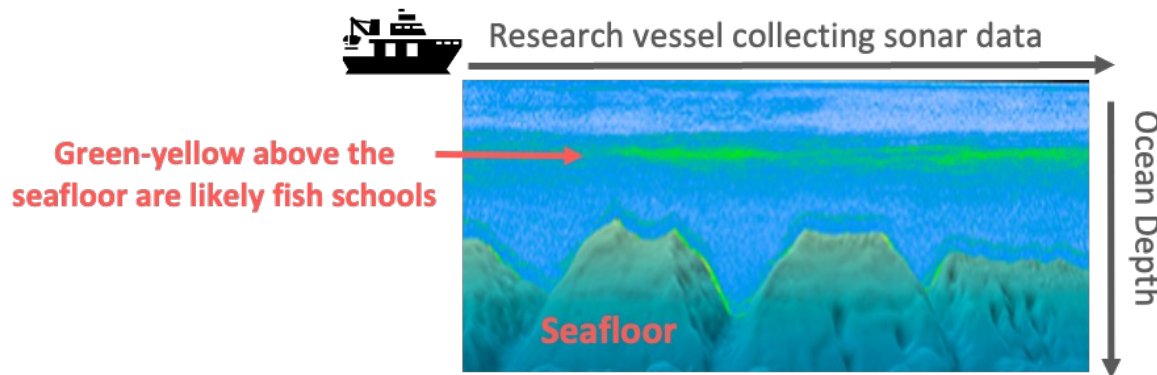
Growing the Community

7/8/24

Why This Matters

Don't let computing be a barrier to research!

We want to help researchers who ask questions like "what if?"



What if you could experiment with post-processing 100,000+ sonar images - at no cost?
(image courtesy of Carrie Wall Bell)

What if you could measure not just one plant - but hundreds?
(image courtesy of Edgar Spalding)

Need for Community

- What we offer: “The PATH project provides services that can advance the science of researchers [...] who have computational workloads that consist of a list of jobs.” - Miron
- How do we (at scale) spread the word, get people connected to capacity, support them as they get started?
- We have to increase our people throughput: an HTCommunity!

Open Questions and Challenges

- Local (campus / project) staff support can be a multiplier for us – is that feasible?
- What researchers *should* hear about us who haven't?
- What segments of the AI research community would benefit?
- How do researchers find us?
- Why do researchers not run work after getting an account?
- Why do researchers stop using the OSPool?

Some Ideas

- Working on better monitoring of existing community
 - Question on sign-up about how people heard about us
- Leverage advisory group recommendations
 - Interest in making a community resource that people can contribute to and share ideas.
- Pursue domain specific relationships and outreach
- Continue campus relationships and how to support them
 - What do institutions need from us to be successful, both for themselves and for their students/faculty/staff?

Building Community at HTC24

- HTC24 is the perfect place to connect with other members of this community. You will hear from many different community representatives throughout the week.
- Talk to staff!
- Talk to each other!
- In short, use this time to build community!

Acknowledgements

This material is based upon work supported by the National Science Foundation under Grant No. 2030508. Any opinions, findings, and conclusions or recommendations expressed in this material are those of the author(s) and do not necessarily reflect the views of the National Science Foundation.