

---

# Upgrading from EL7 to EL9: Tales from Chicago

Judith Stephen  
on behalf of the UChicago MANIAC Lab Team



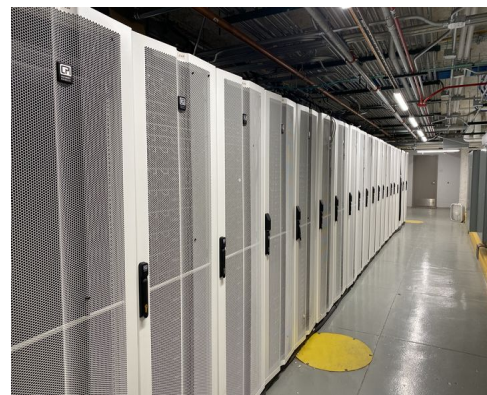
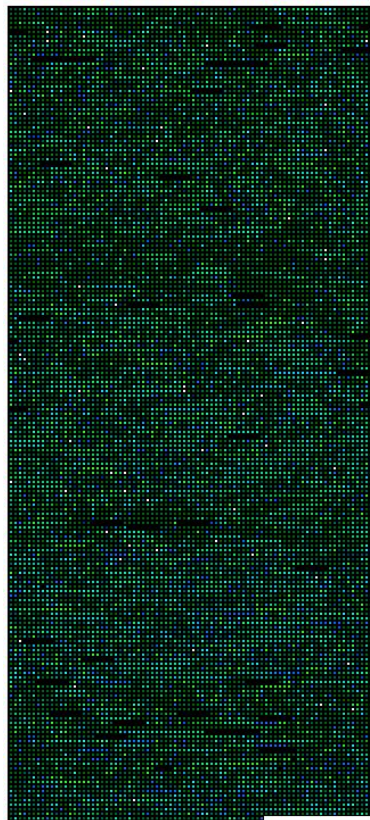
---

Throughput Computing 2024  
7/12/2024

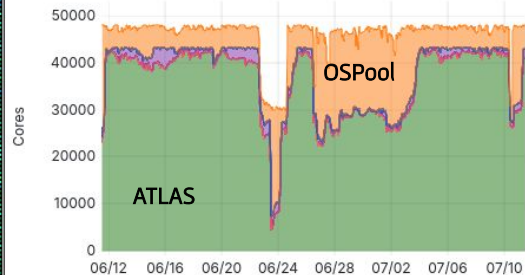


# Who are we?

- Midwest Tier 2
  - Largest ATLAS Tier2 center
  - ~50,000 (logical) core HTCondor pool spread across UChicago, IU, UIUC
  - Regularly give >10% of our cycles to the OSPool!
- ATLAS Analysis Facility at the University of Chicago
  - End-stage analyses, Jupyter, Machine Learning
- IRIS-HEP Scalable Systems Laboratory
  - Software R&D for HL-LHC

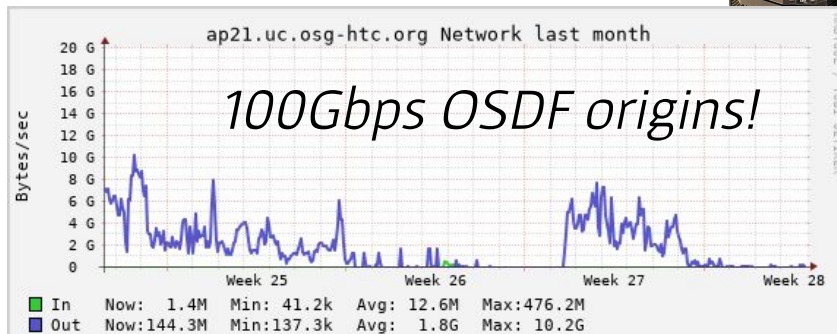


Core Usage by Job Type



# Supporting PATH

- We operate several OSPool access points with built-in OSDF origins
  - `ap(20-23).uc.osg-htc.org`
- We also operate a Kubernetes cluster for PATH infrastructure
  - `hub.opensciencegrid.org`
  - Hosted Compute Entrypoints for CC\* campuses
- Collaboration Support for SPT, XENON, KOTO, Future Colliders



# What are EL7 and EL9 anyway?

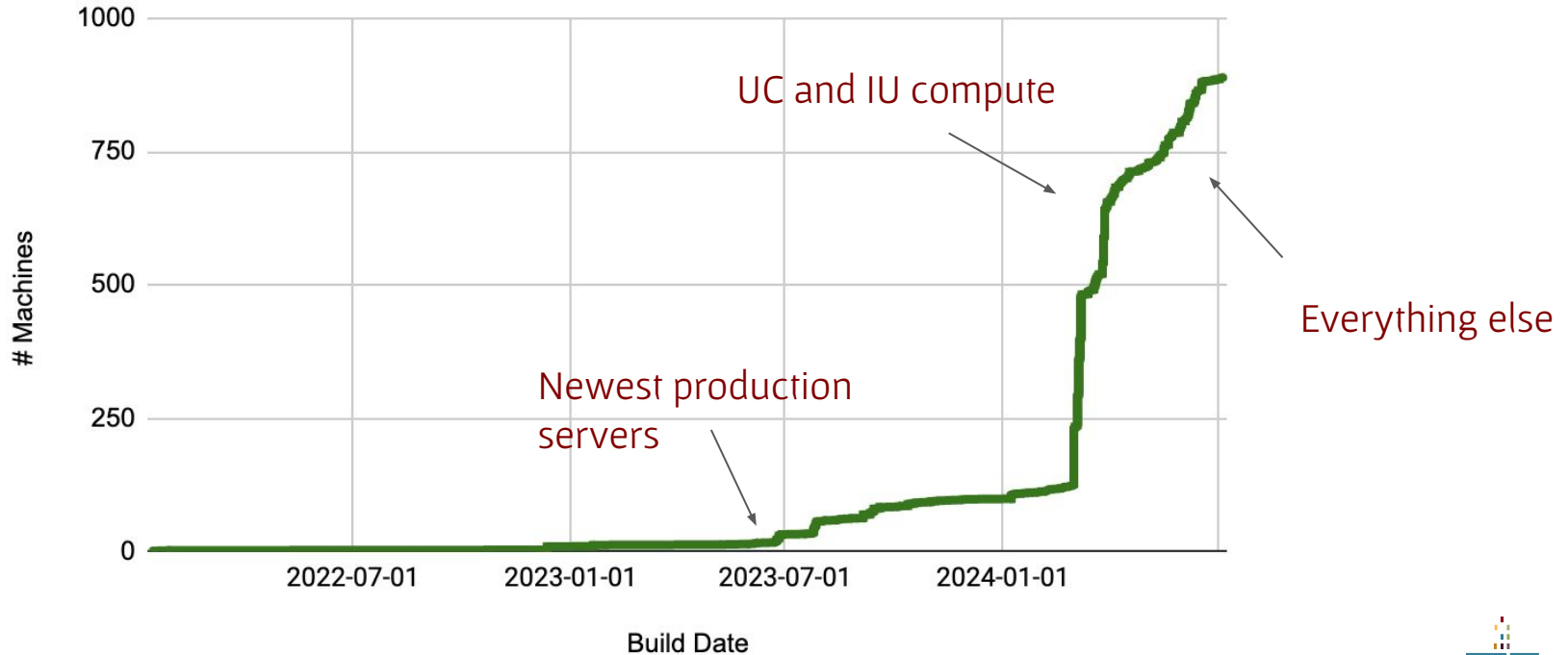
---

- Enterprise Linux (EL) broadly refers to Red Hat Enterprise Linux (RHEL) and its free/open rebuilds (Alma, Rocky, CentOS etc)
- Scientific Linux, a free rebuild from Fermilab, which supported the needs of our community for many years was sadly ended after Enterprise Linux 7
- Red Hat's sudden end-of-support for Enterprise Linux 8 (EL8) and change of direction for CentOS caused a lot of confusion and concern in the community
- We chose to use Alma Linux 9 based on the recommendations of CERN and others



# How long did this take?

Running Total of EL8 and EL9 Machines



# Build infrastructure hurdles

---

- Cobbler 2.8 needed changes to support EL9
- Cobbler 3.x worked with EL9 but introduced other issues
  - Did not scale anymore for our infrastructure (some [relevant github issues](#))
  - No packages for EL7
  - Still needed manual patches (will be merged in 3.4?)
  - Limited support, slow release cadence
- Migrated our existing provisioning infrastructure to Foreman
  - We were already using Foreman for our Puppet monitoring
  - Re-use underlying build infrastructure (TFTP, DHCP, NAT, etc.)



# What about sites not using Cobbler?

---

- Some traditional build tools are on a little bit of shaky ground
- xCAT's future uncertain, primary maintainers stepped down as of December 1, 2023
- Rocks Cluster – still supported? Last updated 7 years ago
- RedHat Satellite – used to be based on Cobbler, now is based on Foreman



# Converting from CentOS-Stream

---

- AlmaLinux provides conversion scripts and plan to support EL8 with security patches until 2029
  - <https://wiki.almalinux.org/documentation/migration-guide>
- Many of our newer servers were already CentOS-Stream 8, but the package repositories evaporated on June 1!
- CentOS-Stream 8 repositories archived June 3 coinciding with the EOL of CentOS 8
  - Old repositories still available at [vault.centos.org](http://vault.centos.org)
  - Mirror at [mirror.rackspace.com/centos-vault](http://mirror.rackspace.com/centos-vault)





# Initial EL9 Impressions

---

- [9.0 Release Notes | Red Hat Product Documentation](#)
- Root SSH disallowed by default
- MFA SSH configuration broken
  - `/etc/ssh/sshd_config.d/50-redhat.conf` turns off `keyboard-interactive`
- Configuration management needed some updates
  - Package name changes, version strings



# Some things don't work anymore...

---

- SHA-1 deprecated
  - Certificate authorities, ssh keys, etc.
  - `update-crypto-policies --set DEFAULT:SHA1`
- Missing drivers in the base image for older hardware
  - Final goodbye to 11th generation Dell servers
- Python 2 is really gone now

# And some things do! (for now)

---

- Networking
  - NetworkManager is the recommended tool
  - ifcfg format still works
  - Will be removed in the next major release
- Firewall configuration
  - iptables is deprecated, replaced by nftables

# Upgrading to OSG 23

---

- Before we upgraded, we cleaned up our existing HTCondor configuration
  - Use the defaults as much as possible!
  - Updated our pool security settings to use tokens
- Very smooth transition from OSG 3.6 to OSG 23
  - Big thanks to the PATh team

# A major RegreSSHion

- We pushed hard to complete as much of the EL9 migration as possible before June 30 to avoid any major security vulnerabilities after the OS went end-of-life
- The predicted vulnerabilities happened... *but only affected EL9!*
  - July 1: CVE-2024-6387
    - *RegreSSHion*, a remote code execution vulnerability in SSH
  - July 8: CVE-2024-6409
    - A different bug with the same behavior
- Please update openssh-server or apply mitigations on your servers if they are on EL9 !!



# Summary

---

- Planning pays off
- It's good to pay down some technical debt
- Be flexible
- Seriously, update openssh!



# Questions?

---

Thank you!