



Progress Update on SolidWorks -> Geant4 Converter

Carl Vuosalo

University of Wisconsin-Madison



Obtained Full LZ Detector Design



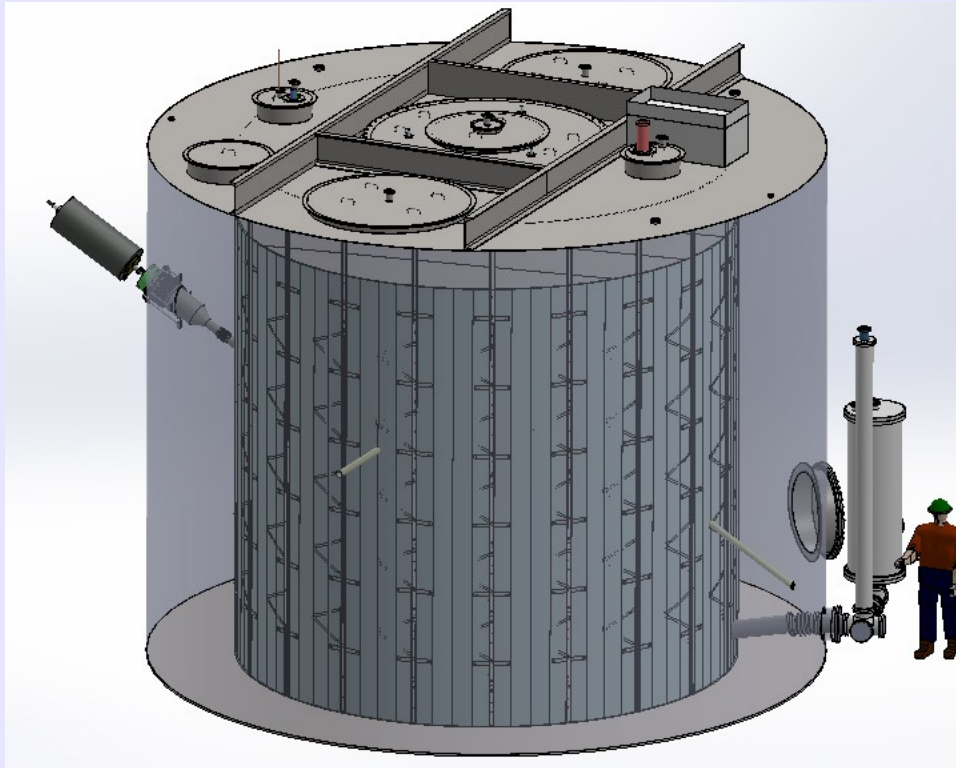
- Oct. 2014 LZ design
- 400 MB in size
- Contains hundreds of components
- Converter takes two hours to process file
- Doesn't crash, but output not correct
- Most components seem incomplete
 - May be “lightweight” components



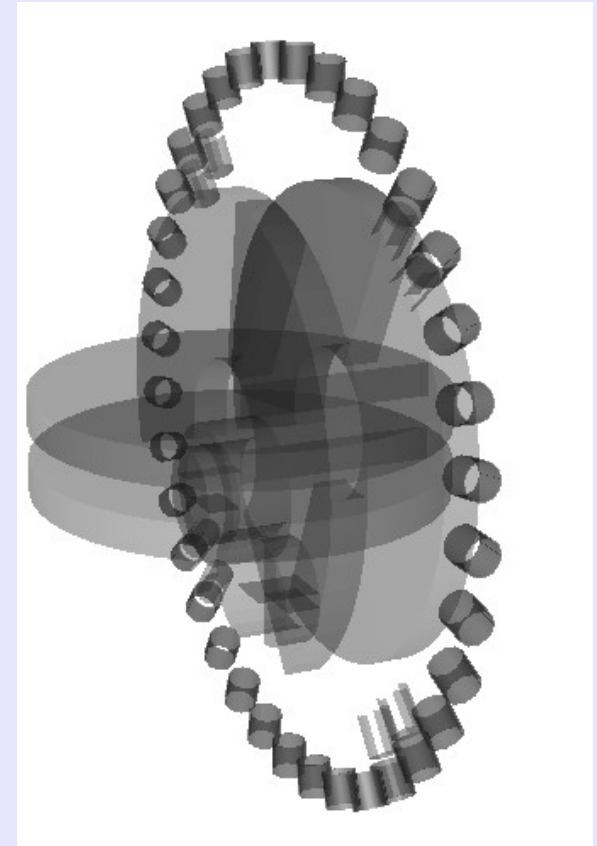
Full LZ Design



SolidWorks Design



Same Design in Geant4



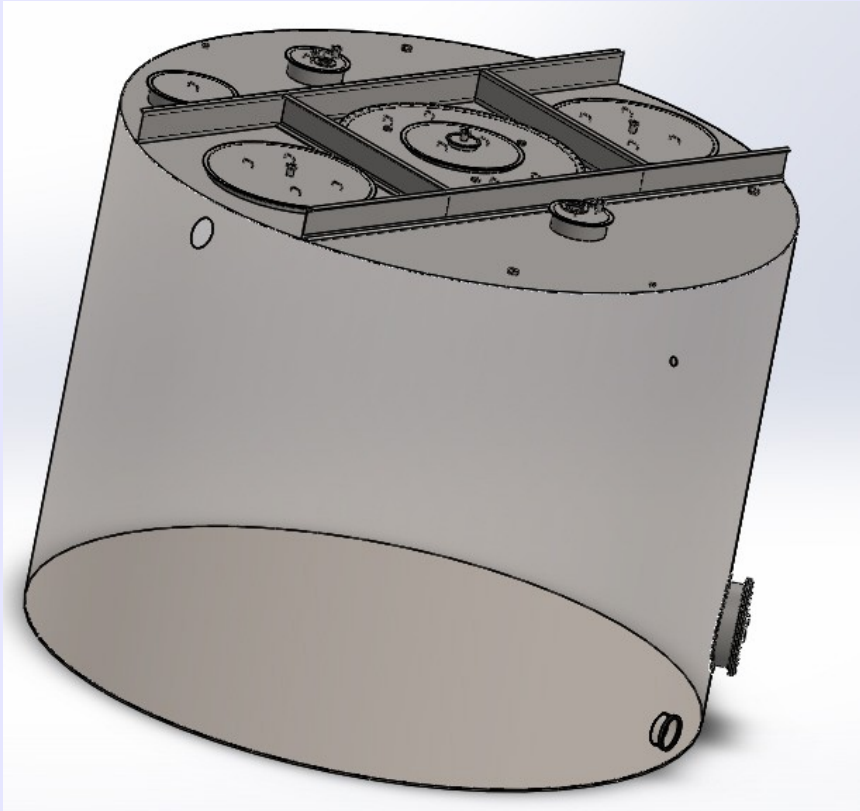
- Converter output incomplete and incorrect, but not randomly distributed
- Lot more work to handle new SolidWorks features



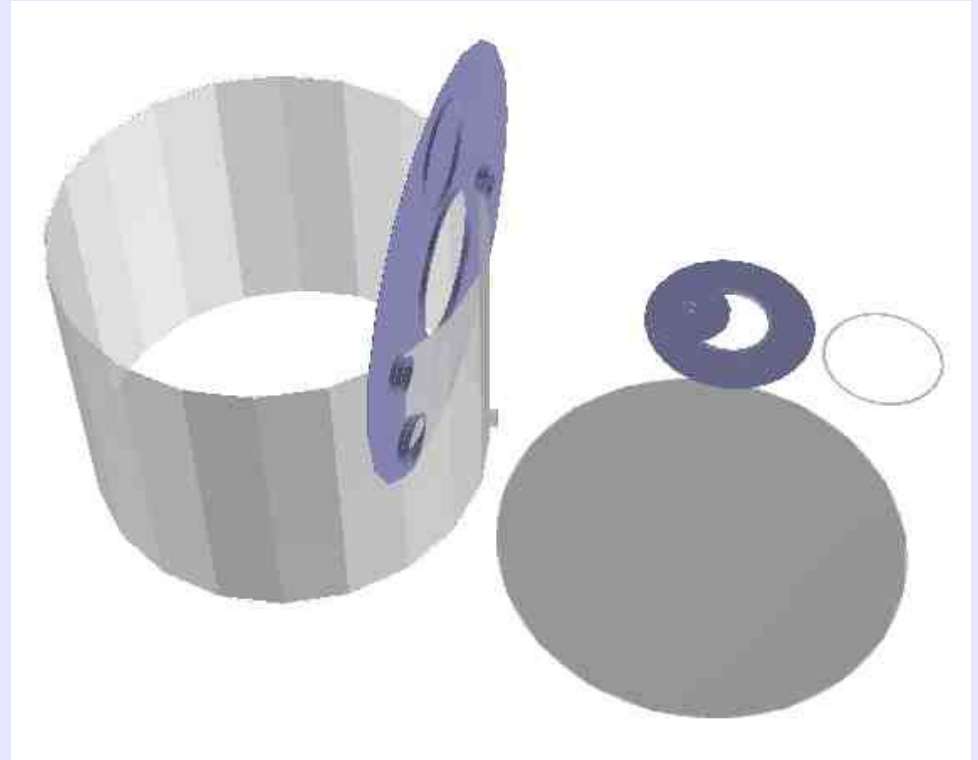
One Assembly: Water Tank



SolidWorks Design



Same Design in Geant4



- Water tank appears (incorrectly) in Geant4 – why not in full design?
 - Maybe components are suppressed in full design
- Some mates are wrongly interpreted, so parts are misplaced